

160

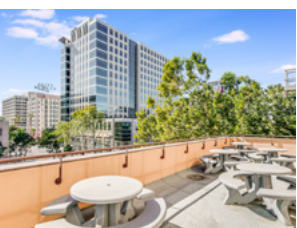
West Santa Clara

±2,000 TO ±13,000 SF
AVAILABLE



CENTURY | URBAN





BE PART OF THE Energy

160 West Santa Clara is a workplace community alive with activity and energy. With its in-house amenities and location adjacent to San Jose's best dining and retail, 160 West Santa Clara offers a destination for experiences, not just a workplace. Featuring modern office space and a vibrant mix of tenants, 160 West Santa Clara is an activated place for coming together.

Experience

WORK
DIFFERENTLY



Renovated main lobby,
common areas & elevators



Secure bike lounge
with lockers



World class tenant amenity
center, conference and
training rooms



Health & wellness with
touchless fixtures & MERV 13
air filtration



On-site fitness and
yoga center



Easy access to Caltrain,
VTA, and BART



Ample, secure on-site
parking garage w/ EV
charging



Across the street from
San Pedro Square and steps
away from downtown's
finest amenities





Rev Up

YOUR ROUTINE

Workouts, hangouts, training, meetings – it’s all at HUB160, our dedicated tenant amenity space. Featuring a casual lounge, yoga studio, upscale fitness and locker rooms, and multiple meeting rooms, HUB160 is where work and wellbeing come together.



Conference room
(capacity 12)



Training center
(capacity 30)



Exclusive lounge
with cafe bar and
catering kitchen



Fitness center
and yoga studio



Locker rooms
with showers

Your Gateway

TO THE BEST
OF SAN JOSE

With global cuisine, arts & cultural venues, parks, and shopping at your doorstep, 160 West Santa Clara offers an exceptional combination of convenience and urban energy. Locating here offers your top talent the lifestyle-centric workplace they're looking for, with an easy commute no matter how they get here.

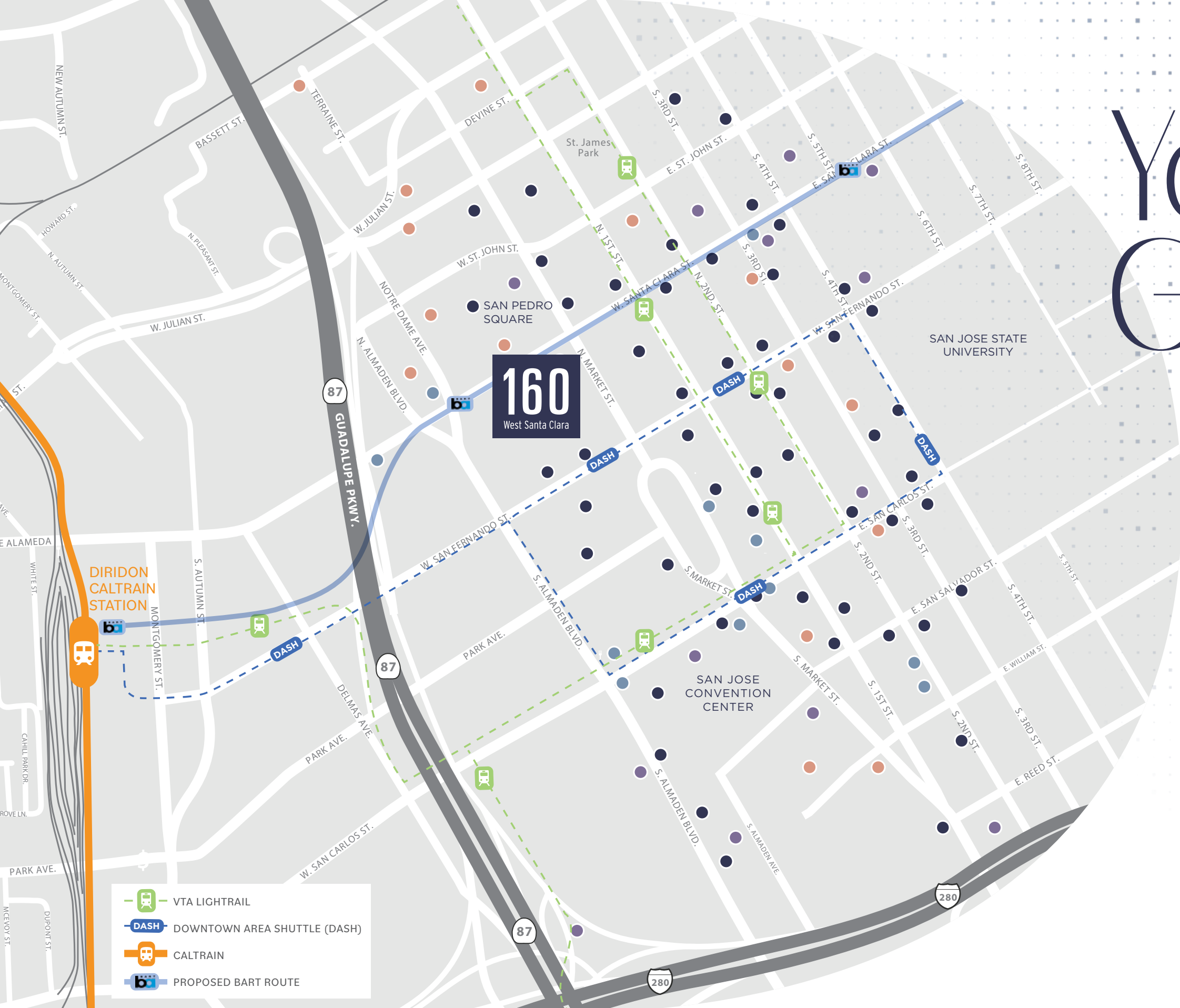
168+ CAFES & EATERIES

1500+ HOTEL ROOMS

16+ APARTMENT & CONDOMINIUM PROJECTS

13+ PARKING GARAGES

80+ CALTRAIN WEEKDAY STOPS



WHY Downtown San Jose



TAX BENEFITS

2-year business tax exception*



PARKING INCENTIVES

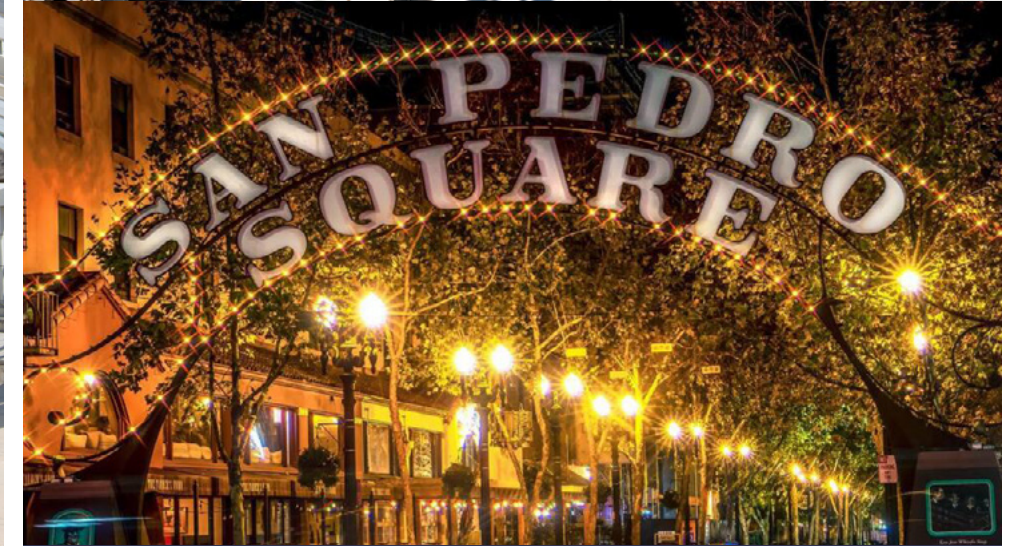
Free downtown parking for 2 years
2 permits per 1,000 SF*



GROWING RETAIL

28 new businesses opened in
summer of 2024

** Businesses new to downtown
(Call for more information)*



Situated at the Gateway to San Pedro Square



Ample Residential Opportunities
2,000 new units since 2020



Vibrant Nightlife
Evening activity up 15% since pandemic











Community Engagement
Street Closures
Makers Fairs
Beautification and Mural Program

A Growth Mindset

Choose from a range of suites with energizing natural light and high-end finishes. Contiguous available suites create the opportunity to customize and expand for growth and fully furnished suites offer move-in ready space for those decisive decision makers.



CURRENT AVAILABILITIES:

| SUITE | SIZE | NOTES |
|---|------------|---|
| 625 | ±2,001 SF | |
| 1025 | ±2,203 SF | |
|  925 | ±2,657 SF |   |
| 1015 | ±2,795 SF | |
| 715 | ±3,302 SF | |
| 475 | ±4,982 SF | |
| 1015/1025 | ±4,998 SF | |
|  775 | ±5,295 SF |  |
|  525 | ±5,843 SF |   |
| 1150 | ±8,168 SF | |
| 102/202 | ±8,466 SF | |
| 800 | ±12,881 SF | |

 = FURNISHED  = MARKET READY

LESS WAITING, More Working

Avoid months of construction and get your team working together now in beautifully renovated, furnished spec suites – without the wait. Featuring high-quality finishes, abundant natural light, and warm, inviting spaces for casual meetings or solo work, our move-in ready suites are designed for you to upgrade your environment easily and quickly.

Furnished Suites:

| | |
|-----------|-----------|
| Suite 925 | ±2,657 SF |
|-----------|-----------|

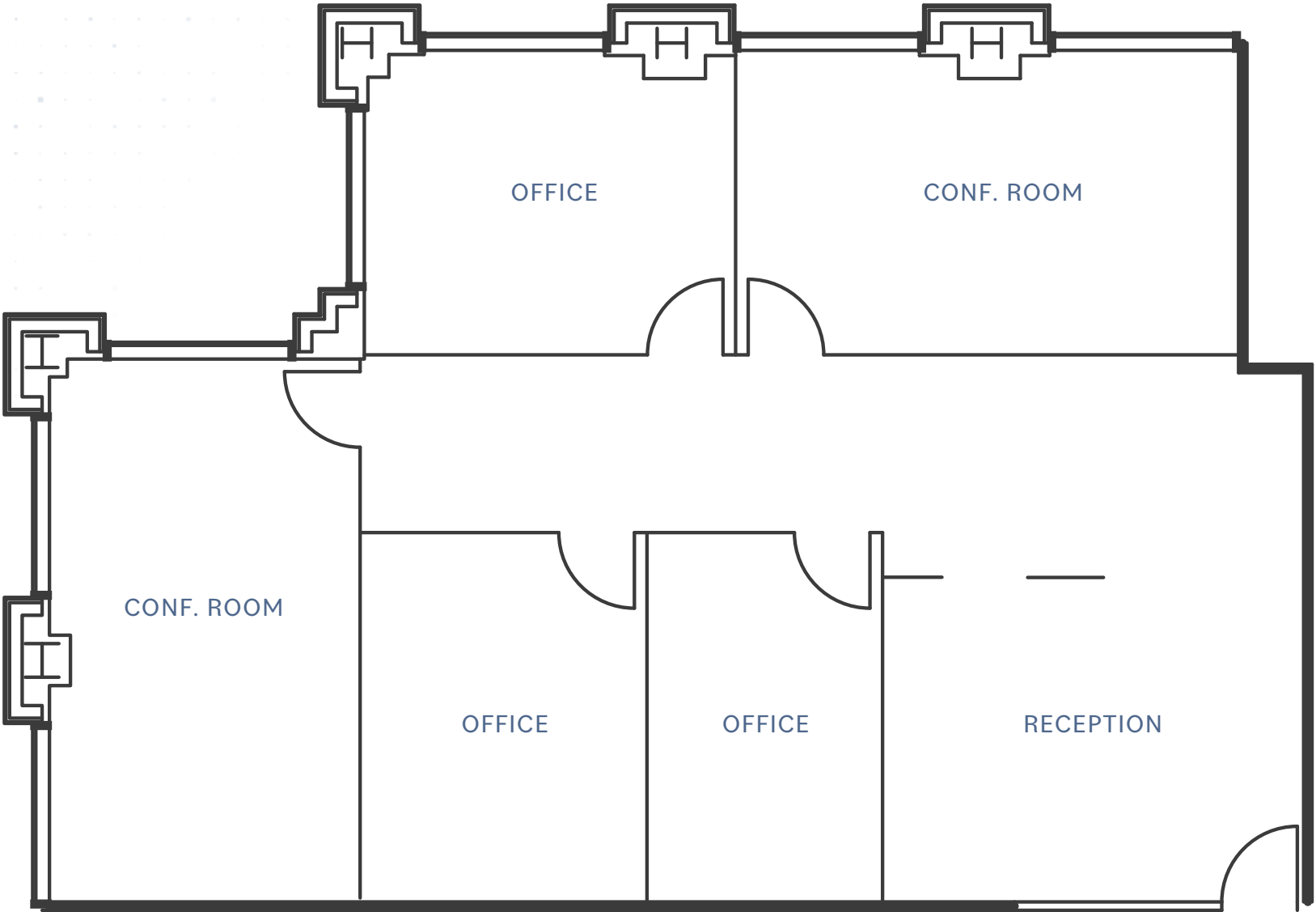
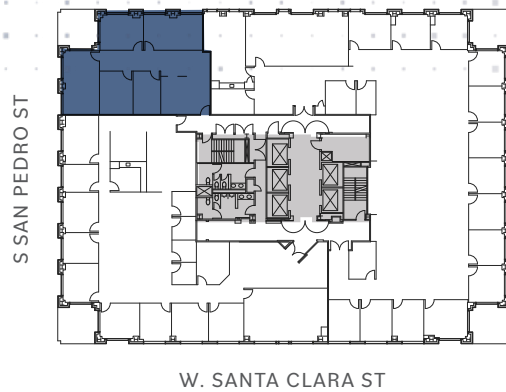
| | |
|-----------|-----------|
| Suite 525 | ±5,843 SF |
|-----------|-----------|



Suite 625

±2,001 SF

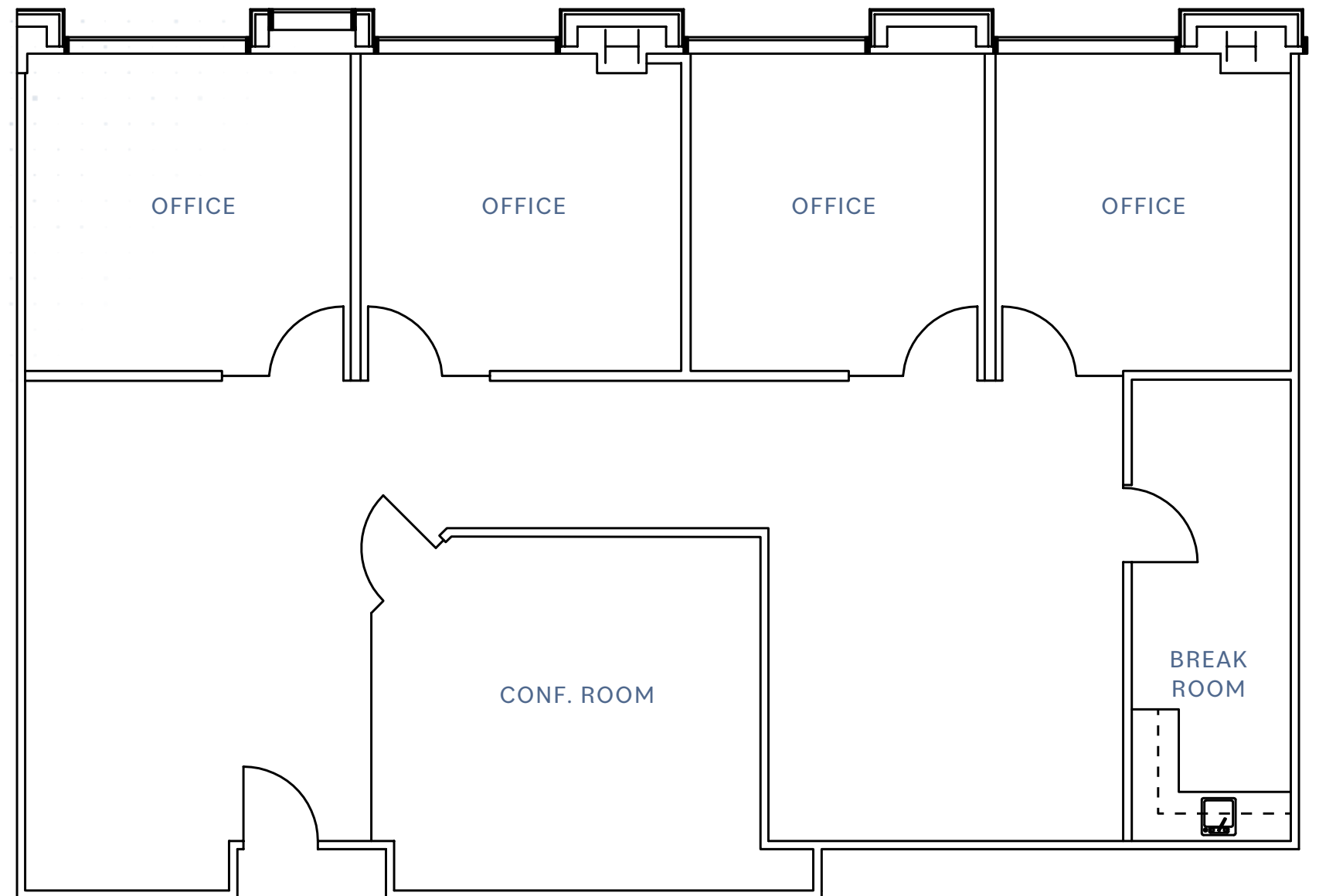
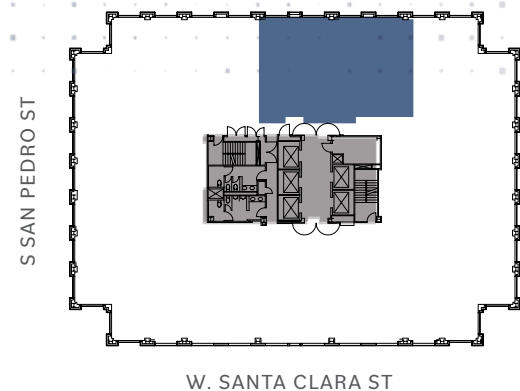
- 3 OFFICES
- 2 CONFERENCE ROOMS



Suite 1025

±2,203 SF

- 4 OFFICES
- 1 CONFERENCE ROOM
- BREAK ROOM
- AVAILABLE NOW

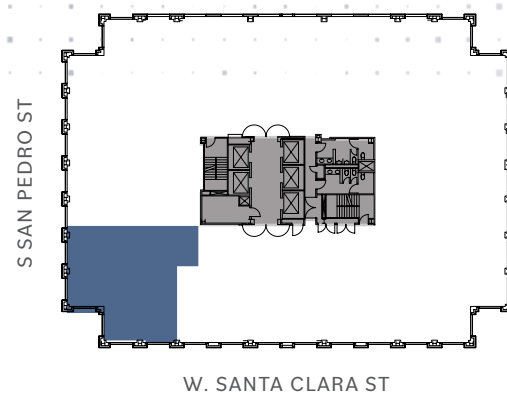


Suite 925

MARKET READY
FULLY FURNISHED
±2,657 SF

- 2 OFFICES
- 2 CONFERENCE ROOMS
- BREAK ROOM
- IT/STORAGE ROOM
- AVAILABLE NOW

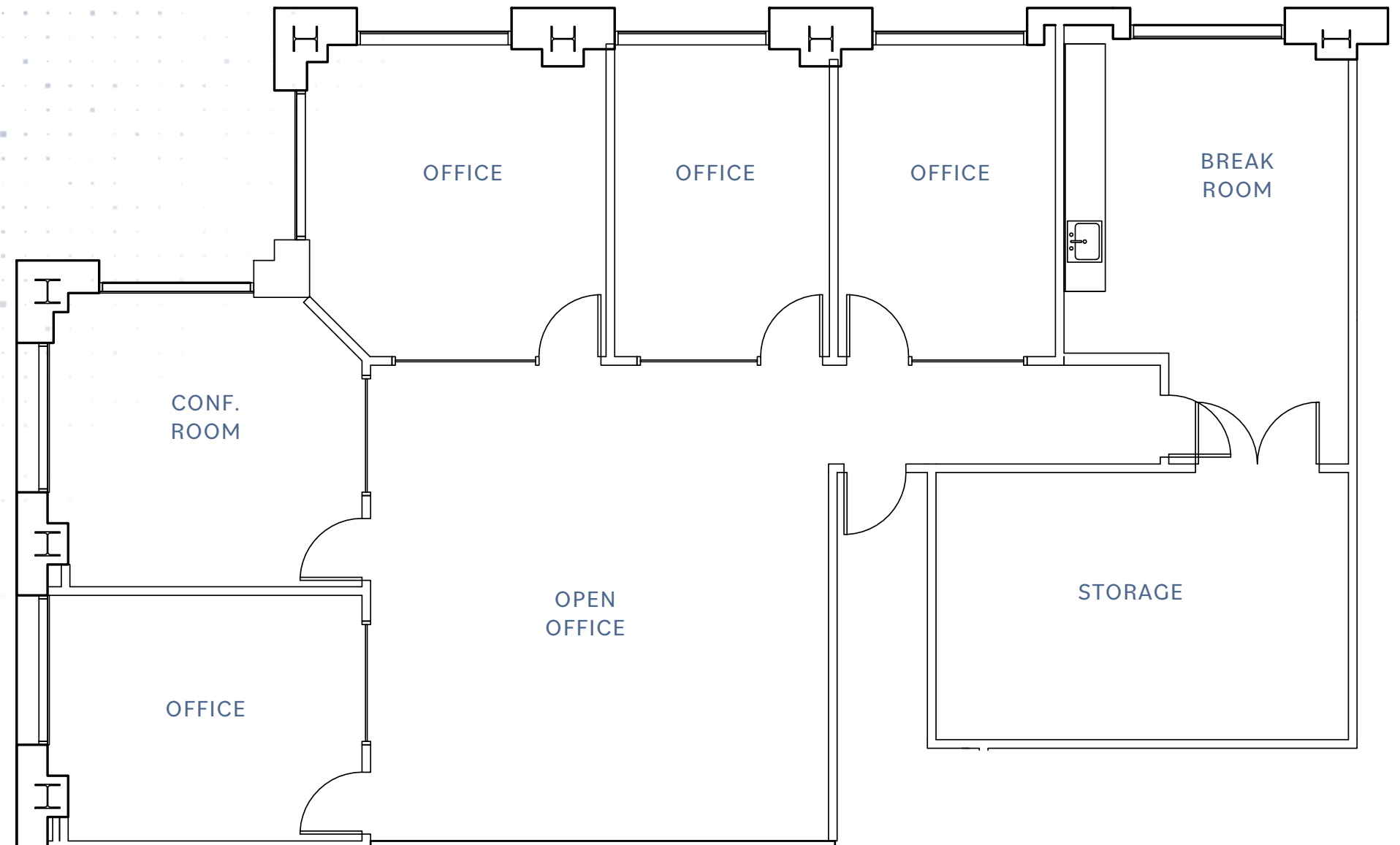
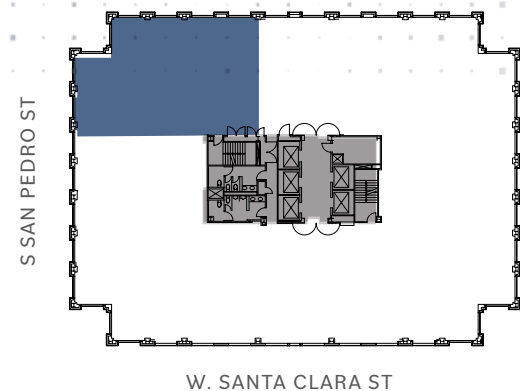
[CLICK HERE FOR VIRTUAL TOUR](#)



Suite 1015

±2,795 SF

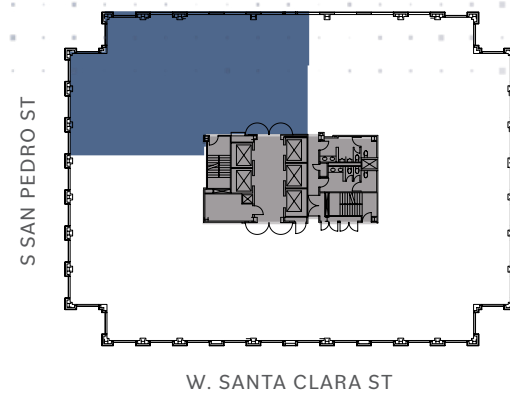
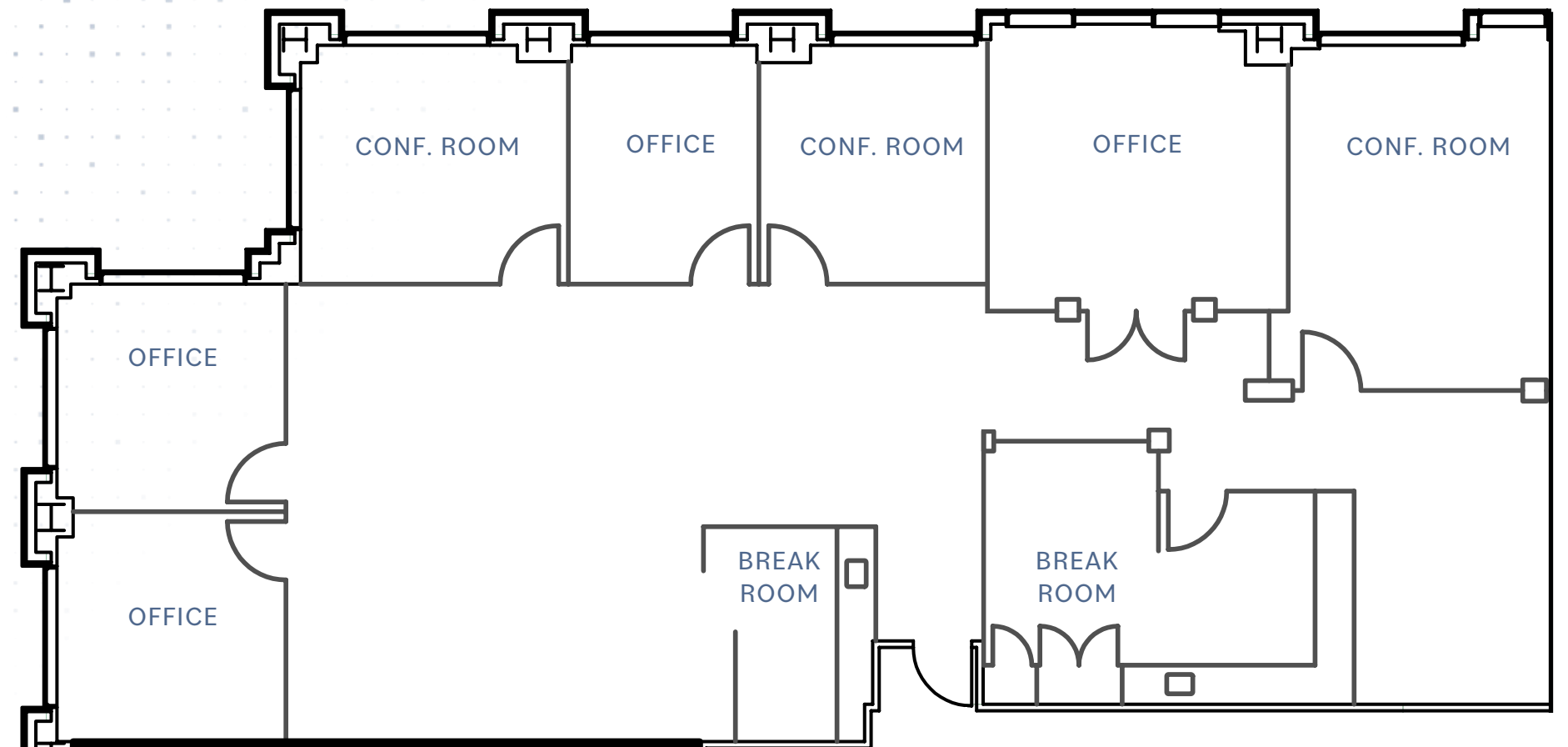
- 4 OFFICES
- CONFERENCE ROOM
- BREAK ROOM
- STORAGE ROOM
- AVAILABLE NOW



Suite 715

±3,302 SF

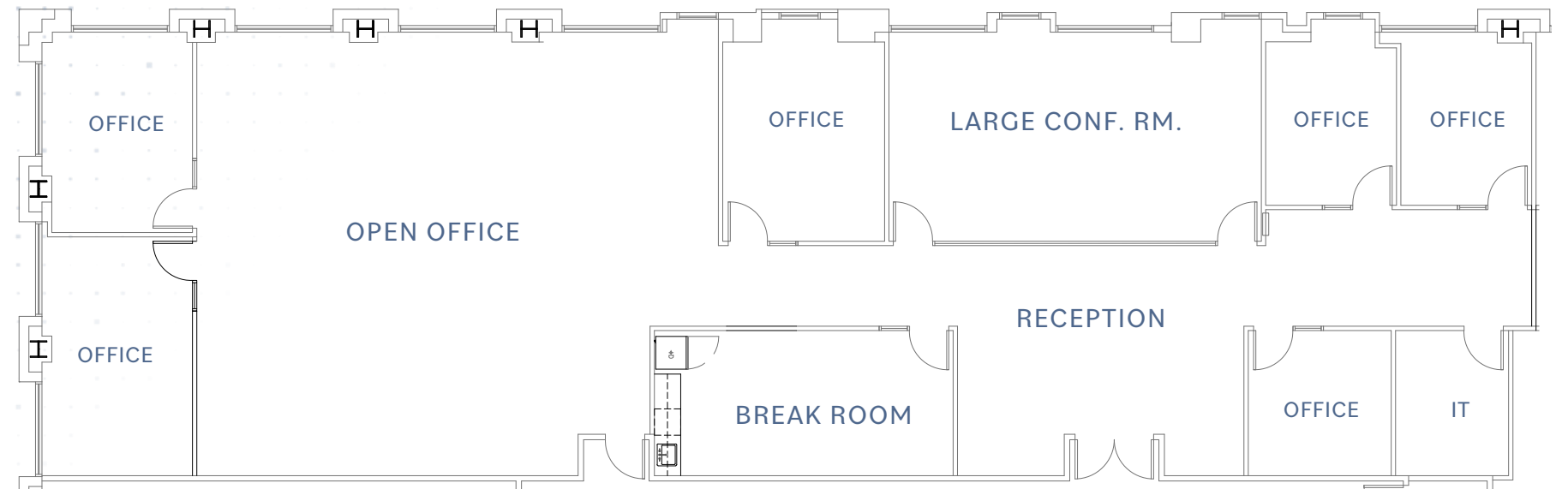
- 3 OFFICES
- 2 CONFERENCE ROOMS
- BREAK ROOM
- AVAILABLE NOW



Suite 475

±4,982 SF

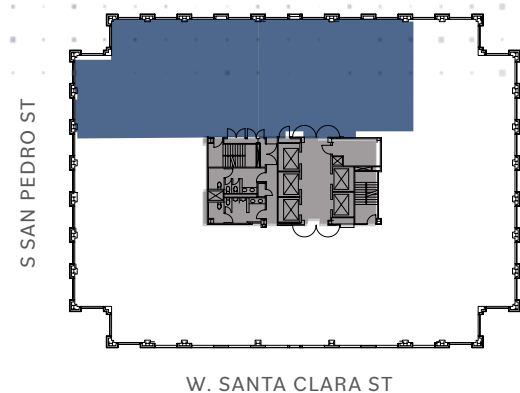
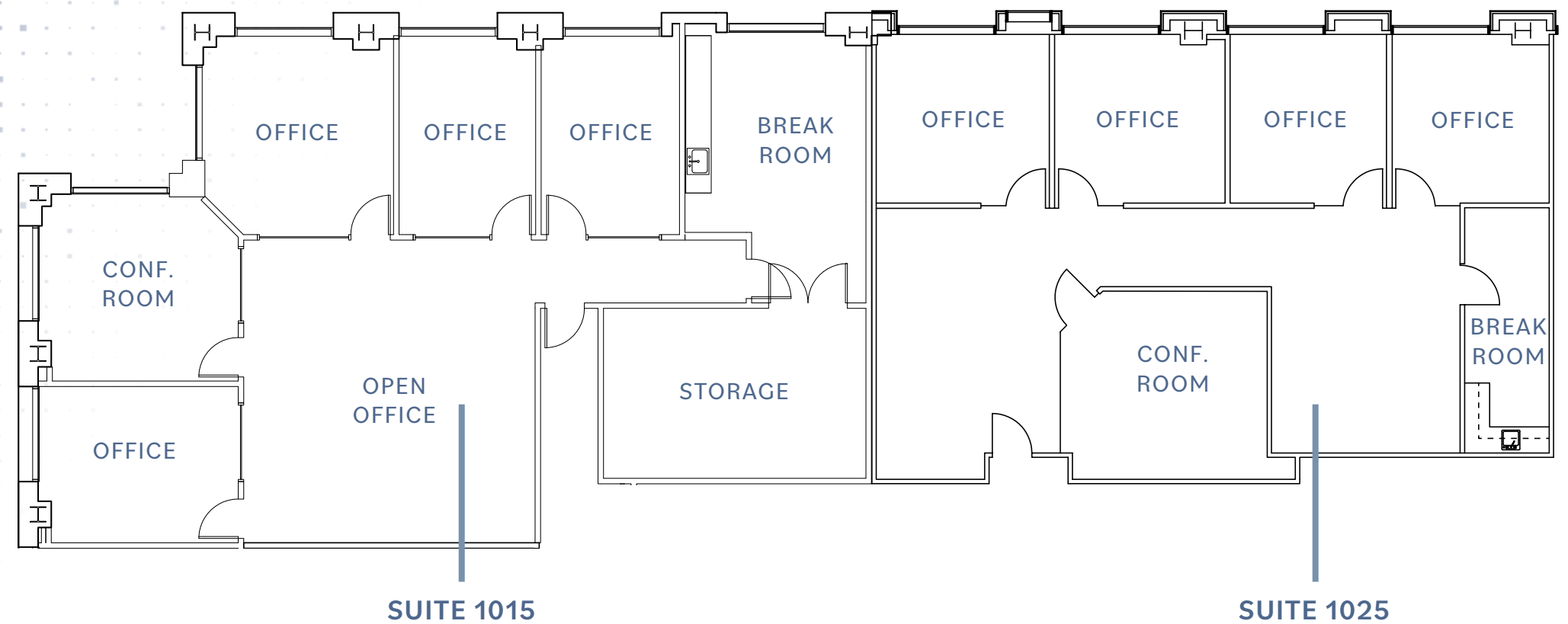
- 6 OFFICES
- 1 CONFERENCE ROOM
- 1 BREAK ROOM
- 1 IT ROOM
- AVAILABLE NOW



Suite 1015/1025

±4,998 SF

- 8 OFFICES
- 2 CONFERENCE ROOMS
- 2 BREAK AREAS
- 1 STORAGE ROOM
- AVAILABLE NOW

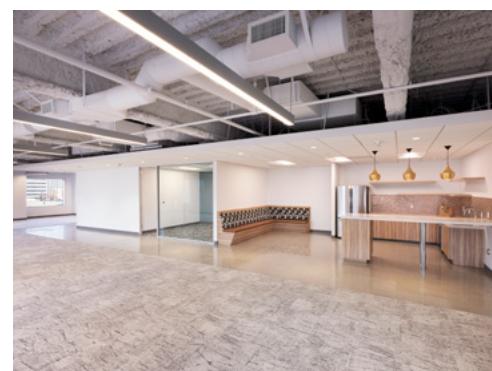
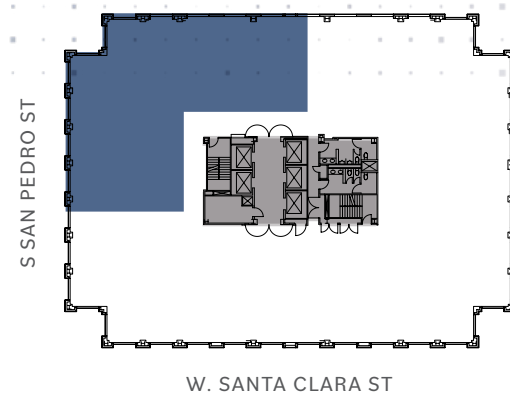
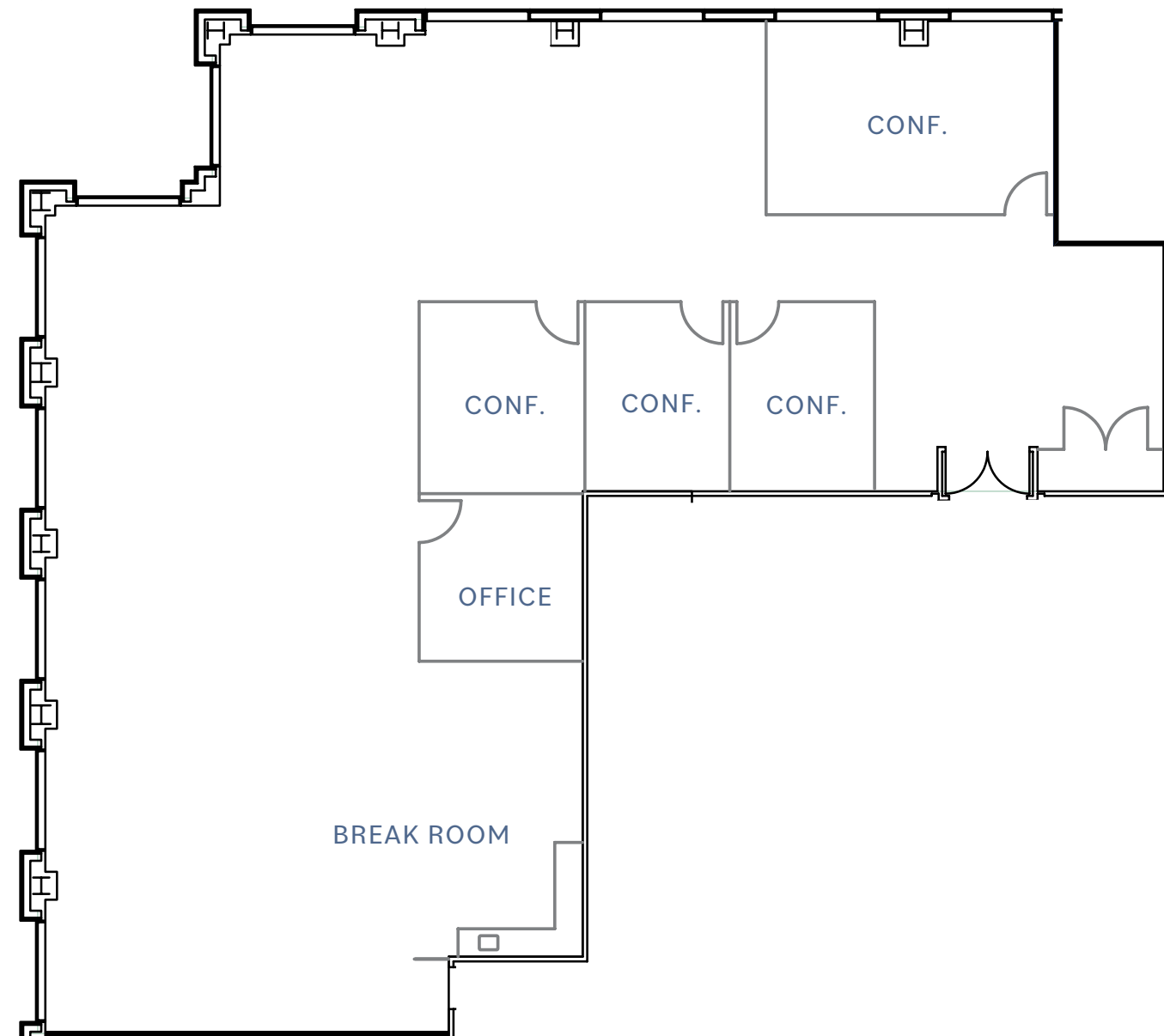


Suite 775

MARKET READY
±5,295 SF

- 4 CONFERENCE ROOMS
- 1 OFFICE
- 1 BREAK ROOM
- AVAILABLE NOW

[CLICK HERE FOR VIRTUAL TOUR](#)

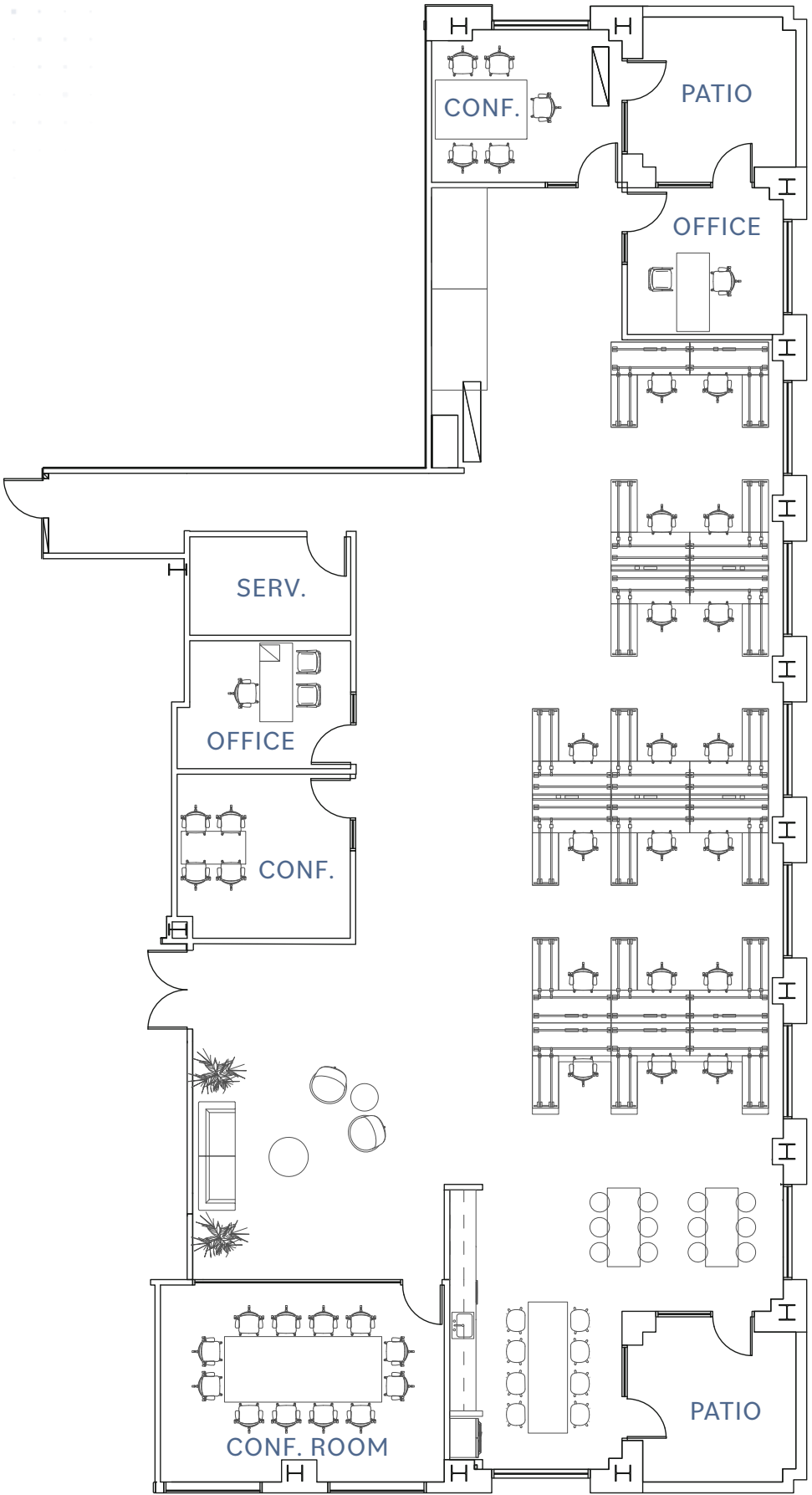
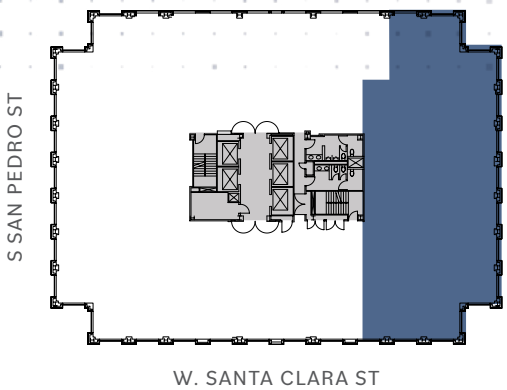


Suite 525

FURNISHED MARKET READY
±5,843 SF

- 2 OFFICES
- 3 CONFERENCE ROOMS
- 2 OUTDOOR PATIOS
- SERVER ROOM
- 18 WORKSTATIONS
- 2 PHONE BOOTHS
- AVAILABLE NOW

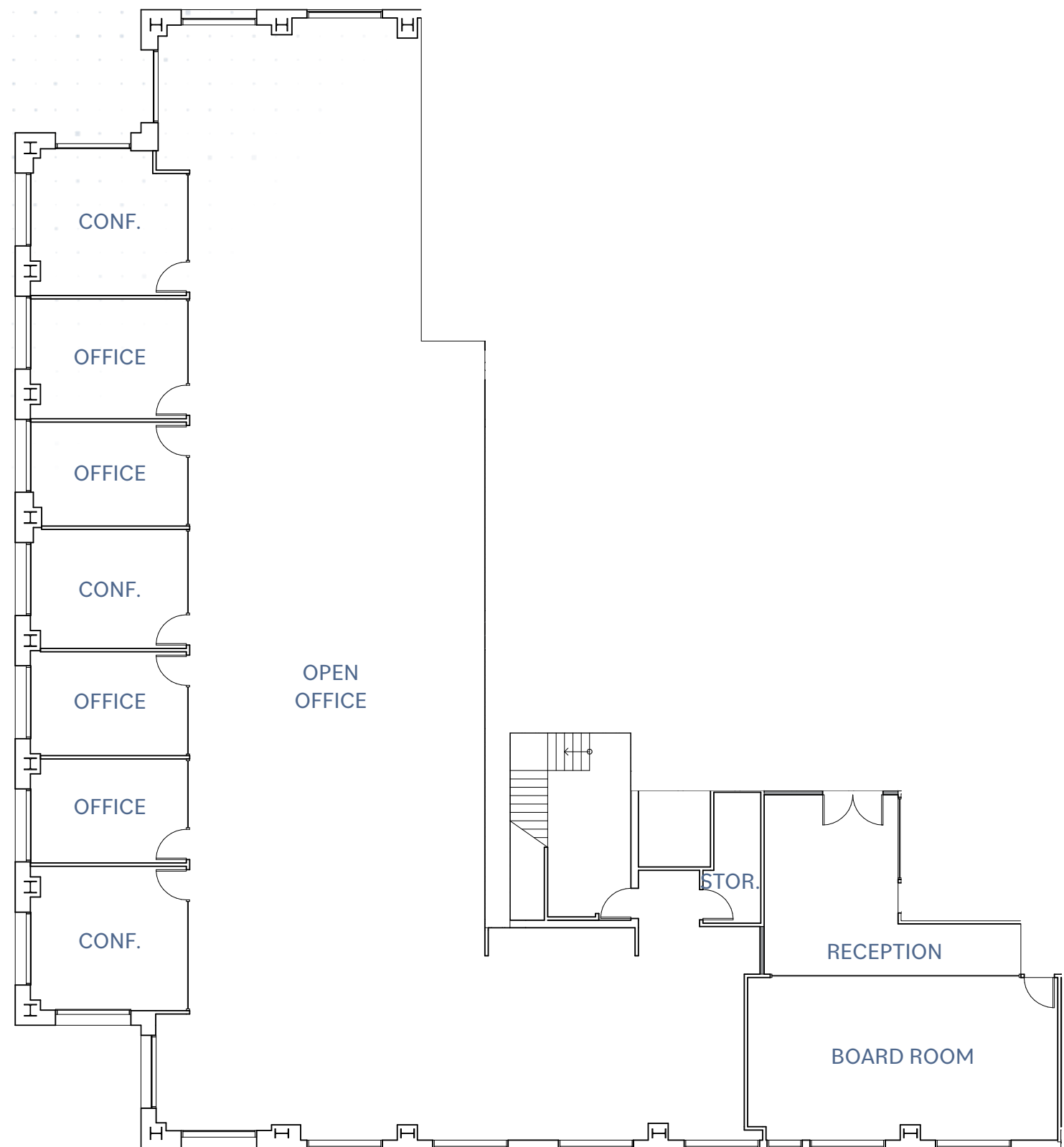
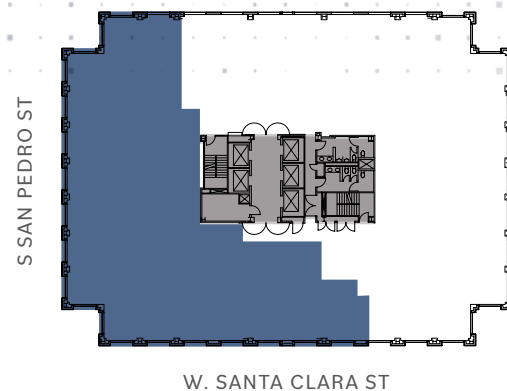
CLICK HERE FOR VIRTUAL TOUR



Suite 1150

±8,168 SF

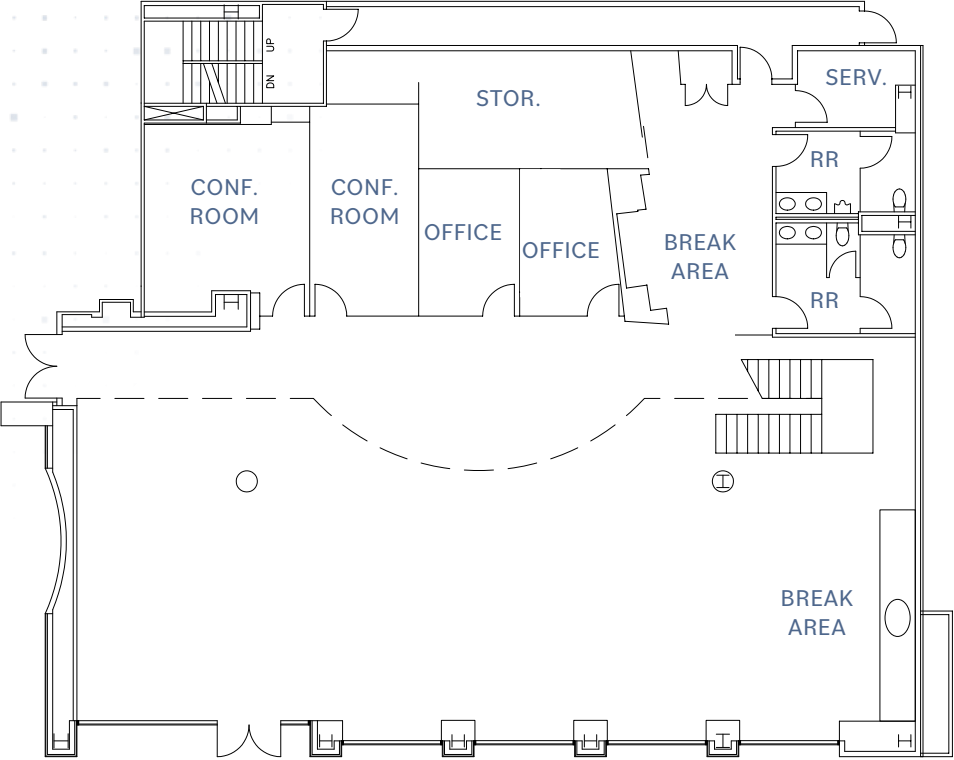
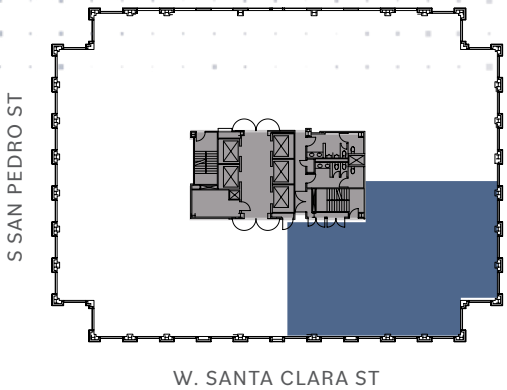
- 4 OFFICES
- 3 CONFERENCE ROOMS
- 1 BOARD ROOM
- 1 STORAGE ROOM
- RECEPTION
- OPEN OFFICE
- AVAILABLE NOW



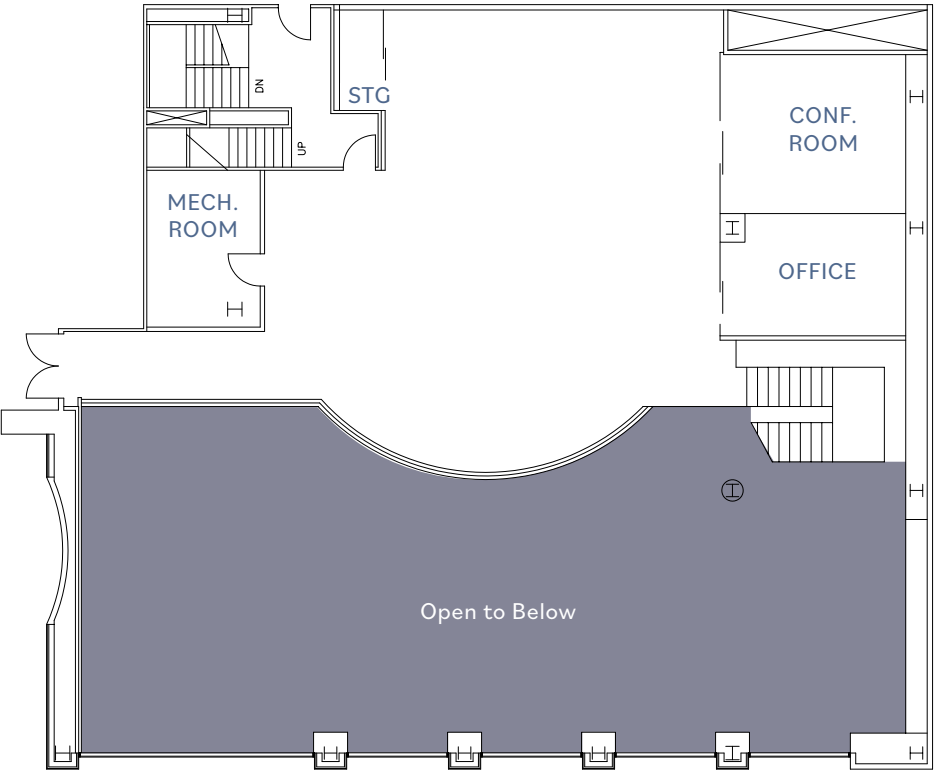
Suite 102/202

±8,466 SF

- 3 OFFICES
- 3 CONFERENCE ROOMS
- 2 BREAK AREAS
- 1 MECHANICAL ROOM
- 1 STORAGE ROOM
- IN-SUITE RESTROOMS
- AVAILABLE NOW



FIRST FLOOR

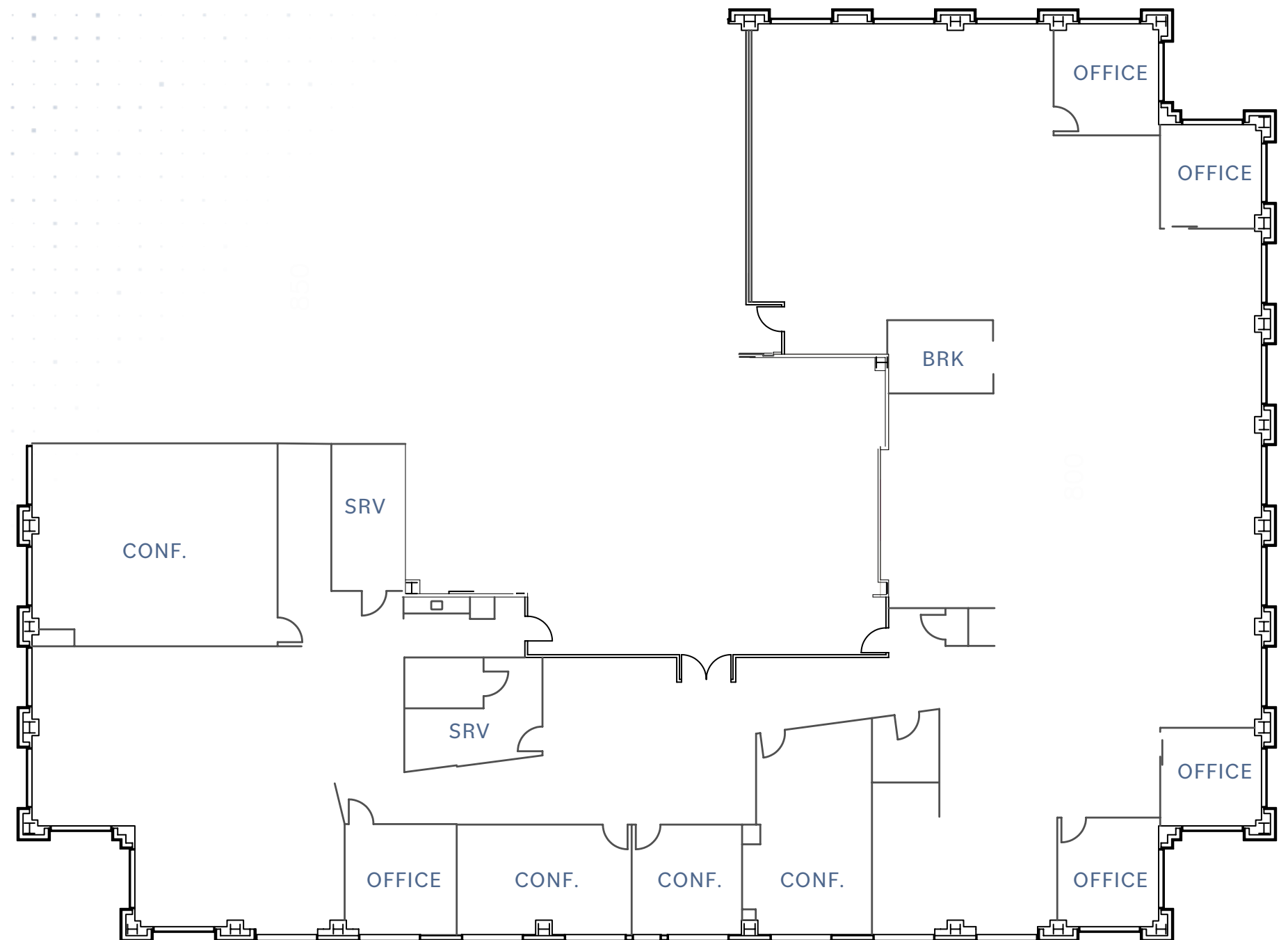
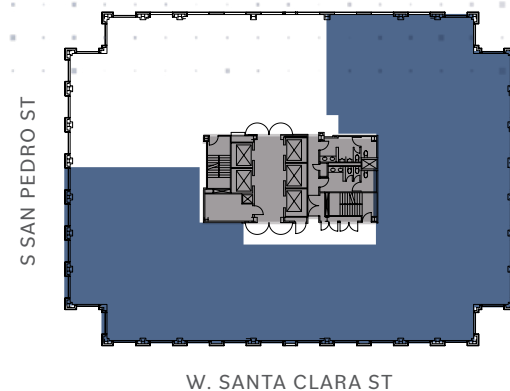


SECOND FLOOR

Suite 800

±12,881 SF

- 5 OFFICES
- 4 CONFERENCE ROOMS
- 2 BREAK ROOMS
- 2 SERVER ROOMS
- AVAILABLE NOW



160

West Santa Clara

BRANDON BAIN

+1 408 615 3416

brandon.bain@cushwake.com

LIC #01308375

JEFF CUSHMAN

+1 917 575 4722

jeff.cushman@cushwake.com

LIC #01308295

SCOTT DEVER

+1 408 615 3457

scott.dever@cushwake.com

LIC #01890552

DOLORES ESTRADA

+1 408 436 3640

dolores.estrada@cushwake.com

LIC #02083800

©2025 Cushman & Wakefield. All rights reserved. The information contained in this communication is strictly confidential. This information has been obtained from sources believed to be reliable but has not been verified. NO WARRANTY OR REPRESENTATION, EXPRESS OR IMPLIED, IS MADE AS TO THE CONDITION OF THE PROPERTY (OR PROPERTIES) REFERENCED HEREIN OR AS TO THE ACCURACY OR COMPLETENESS OF THE INFORMATION CONTAINED HEREIN, AND SAME IS SUBMITTED SUBJECT TO ERRORS, OMISSIONS, CHANGE OF PRICE, RENTAL OR OTHER CONDITIONS, WITHDRAWAL WITHOUT NOTICE, AND TO ANY SPECIAL LISTING CONDITIONS IMPOSED BY THE PROPERTY OWNER(S). ANY PROJECTIONS, OPINIONS OR ESTIMATES ARE SUBJECT TO UNCERTAINTY AND DO NOT SIGNIFY CURRENT OR FUTURE PROPERTY PERFORMANCE. COE-PM-West-04.1.2025



**CUSHMAN &
WAKEFIELD**

CENTURY | URBAN