

# 160

West Santa Clara

±1,500 TO ±13,000 SF  
AVAILABLE



CENTURY | URBAN





# BE PART OF THE Energy

160 West Santa Clara is a workplace community alive with activity and energy. With its in-house amenities and location adjacent to San Jose's best dining and retail, 160 West Santa Clara offers a destination for experiences, not just a workplace. Featuring modern office space and a vibrant mix of tenants, 160 West Santa Clara is an activated place for coming together.

# Experience

WORK  
DIFFERENTLY



Renovated main lobby, common areas & elevators



Secure bike lounge with lockers



World class tenant amenity center, conference and training rooms



Health & wellness with touchless fixtures & MERV 13 air filtration



On-site fitness and yoga center



Easy access to Caltrain, VTA, and BART

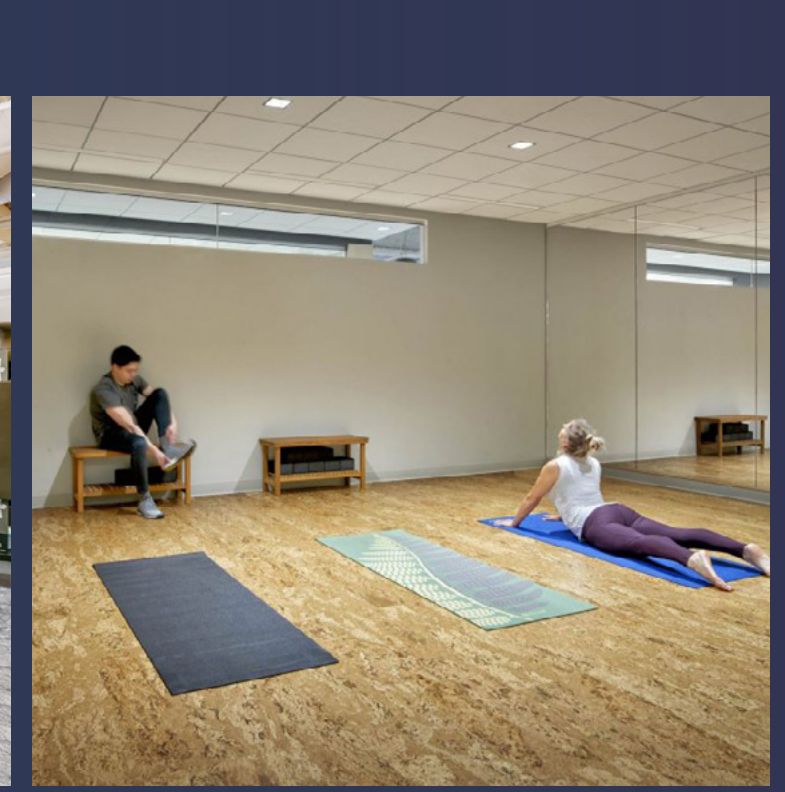


Ample, secure on-site parking garage w/ EV charging



Across the street from San Pedro Square and steps away from downtown's finest amenities





# RevUp YOUR ROUTINE

Workouts, hangouts, training, meetings - it's all at HUB160, our dedicated tenant amenity space. Featuring a casual lounge, yoga studio, upscale fitness and locker rooms, and multiple meeting rooms, HUB160 is where work and wellbeing come together.



Conference room  
(capacity 12)



Training center  
(capacity 30)



Exclusive lounge  
with cafe bar and  
catering kitchen



Fitness center  
and yoga studio



Locker rooms  
with showers

# Your Gateway

TO THE BEST  
OF SAN JOSE

With global cuisine, arts & cultural venues, parks, and shopping at your doorstep, 160 West Santa Clara offers an exceptional combination of convenience and urban energy. Locating here offers your top talent the lifestyle-centric workplace they're looking for, with an easy commute no matter how they get here.

168+ CAFES & EATERIES

1500+ HOTEL ROOMS

16+ APARTMENT & CONDOMINIUM PROJECTS

13+ PARKING GARAGES

80+ CALTRAIN WEEKDAY STOPS









# A Growth Mindset

Choose from a range of suites with energizing natural light and high-end finishes. Contiguous available suites create the opportunity to customize and expand for growth and fully furnished suites offer move-in ready space for those decisive decision makers.



## CURRENT AVAILABILITIES:

| SUITE   | SIZE       | NOTES   |
|---|------------|---|
| 650   | ±1,510 SF  | ★   |
|  1625  | ±1,834 SF  |  ★   |
| 625   | ±1,977 SF  |   |
| 715   | ±2,087 SF  |   |
| 1025  | ±2,200 SF  |   |
| 925   | ±2,968 SF  |  ★   |
| 700   | ±4,604 SF  |   |
|  775 | ±5,119 SF  | ★   |
|  525 | ±5,733 SF  |  ★ |
| 700/715   | ±6,691 SF  |   |
| 475   | ±8,366 SF  |   |
| 102/202   | ±8,455 SF  |   |
| 1150  | ±8,741 SF  |   |
| 800   | ±12,921 SF |   |

 = FURNISHED     = MARKET READY

LESS WAITING,  
**More  
Working**

Avoid months of construction and get your team working together now in beautifully renovated, furnished spec suites - without the wait. Featuring high-quality finishes, abundant natural light, and warm, inviting spaces for casual meetings or solo work, our move-in ready suites are designed for you to upgrade your environment easily and quickly.

Furnished Suites:

|            |           |
|------------|-----------|
| Suite 1625 | ±1,834 SF |
| Suite 925  | ±2,968 SF |
| Suite 525  | ±5,733 SF |

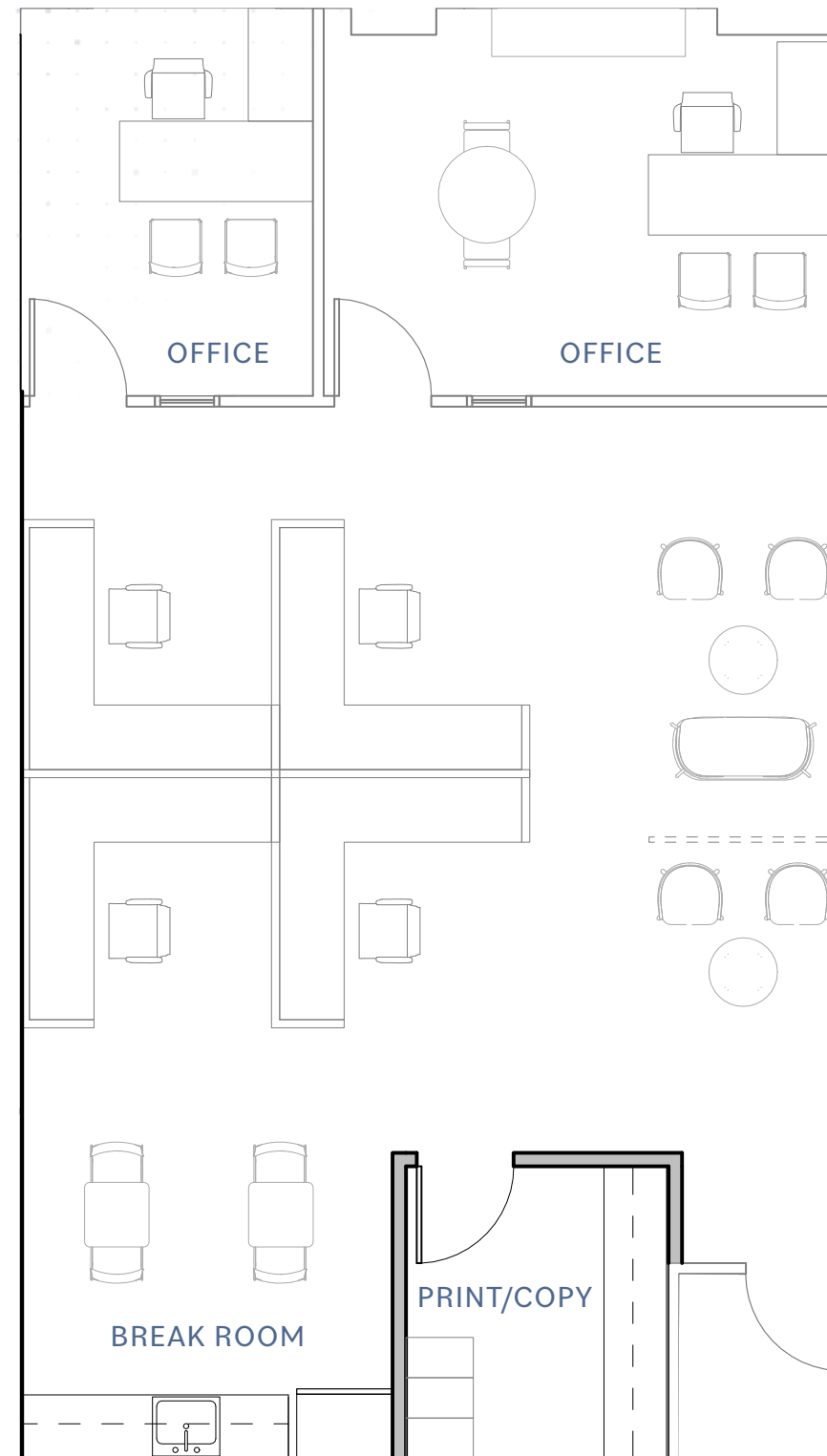
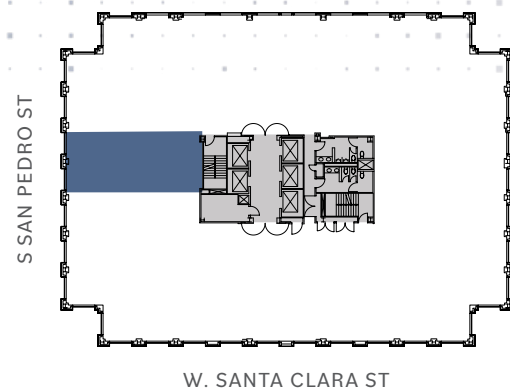


# Suite 650

MARKET READY

±1,510 SF

- 2 OFFICES
- BREAK ROOM
- PRINT/COPY
- AVAILABLE NOW



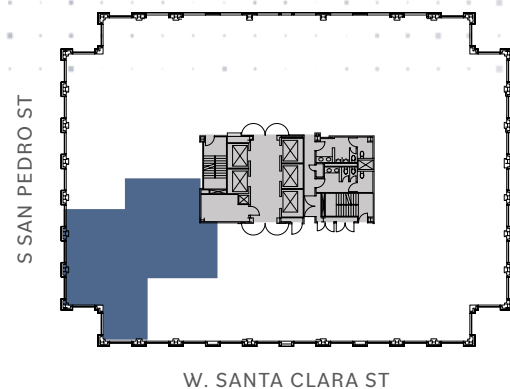
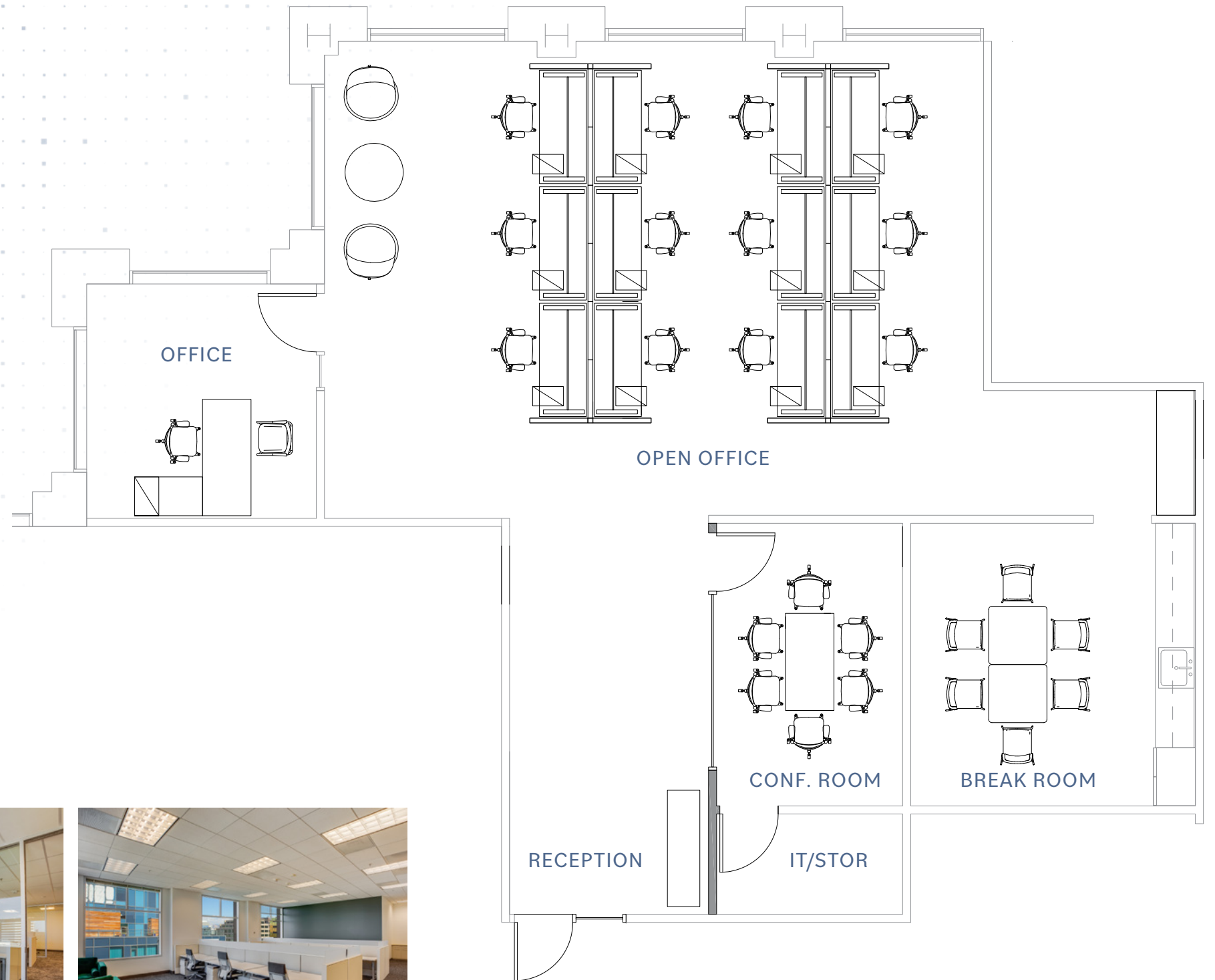


# Suite 1625

**MARKET READY  
FULLY FURNISHED  
±1,834 SF**

- 1 OFFICE
- 1 CONFERENCE ROOM
- BREAK ROOM
- IT/STORAGE ROOM
- AVAILABLE NOW

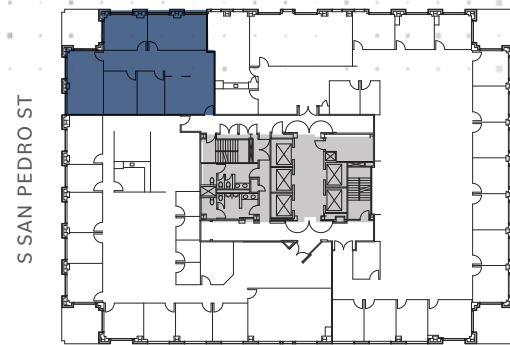
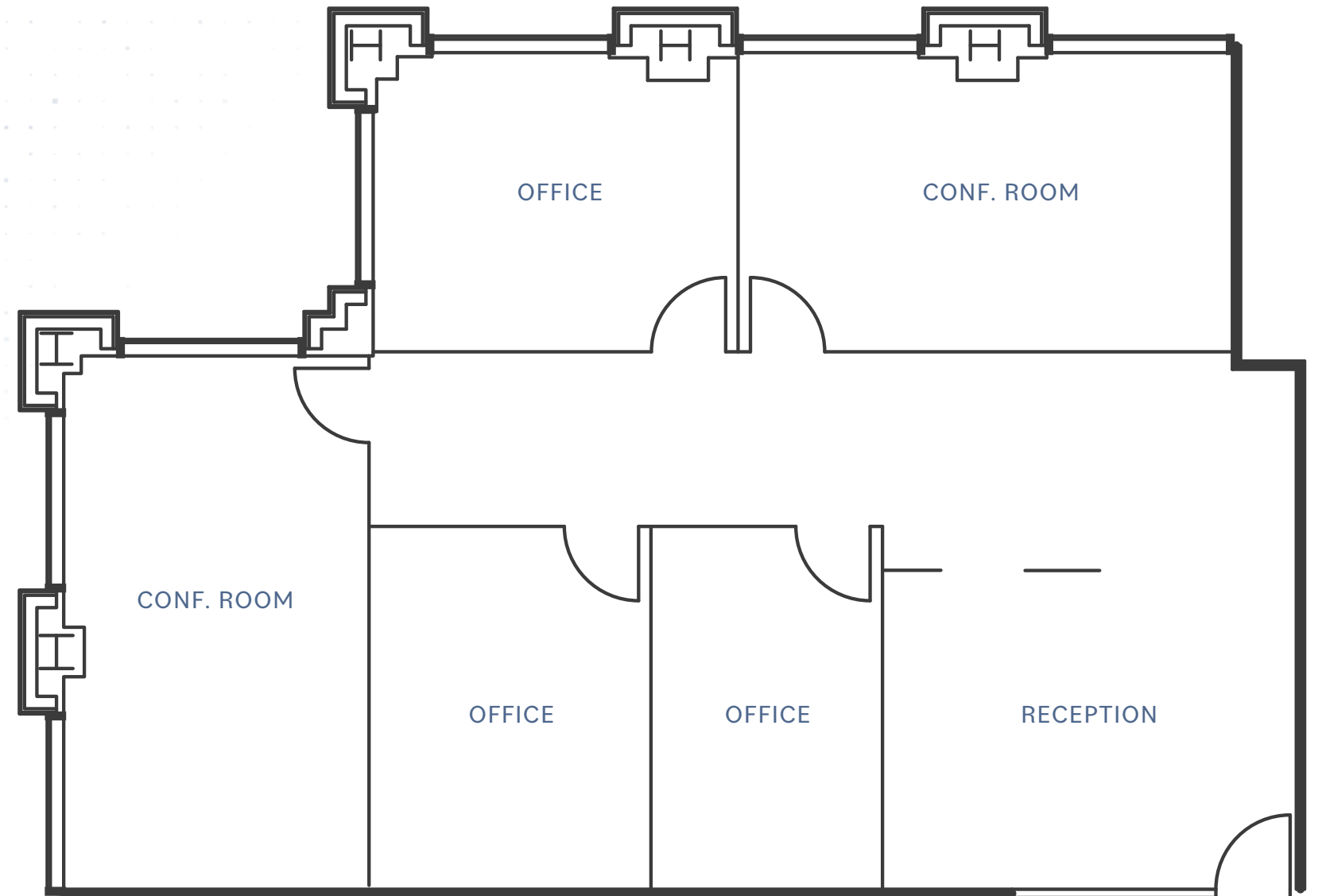
[CLICK HERE FOR VIRTUAL TOUR](#)



# Suite 625

±1,977 SF

- 3 OFFICES
- 2 CONFERENCE ROOMS

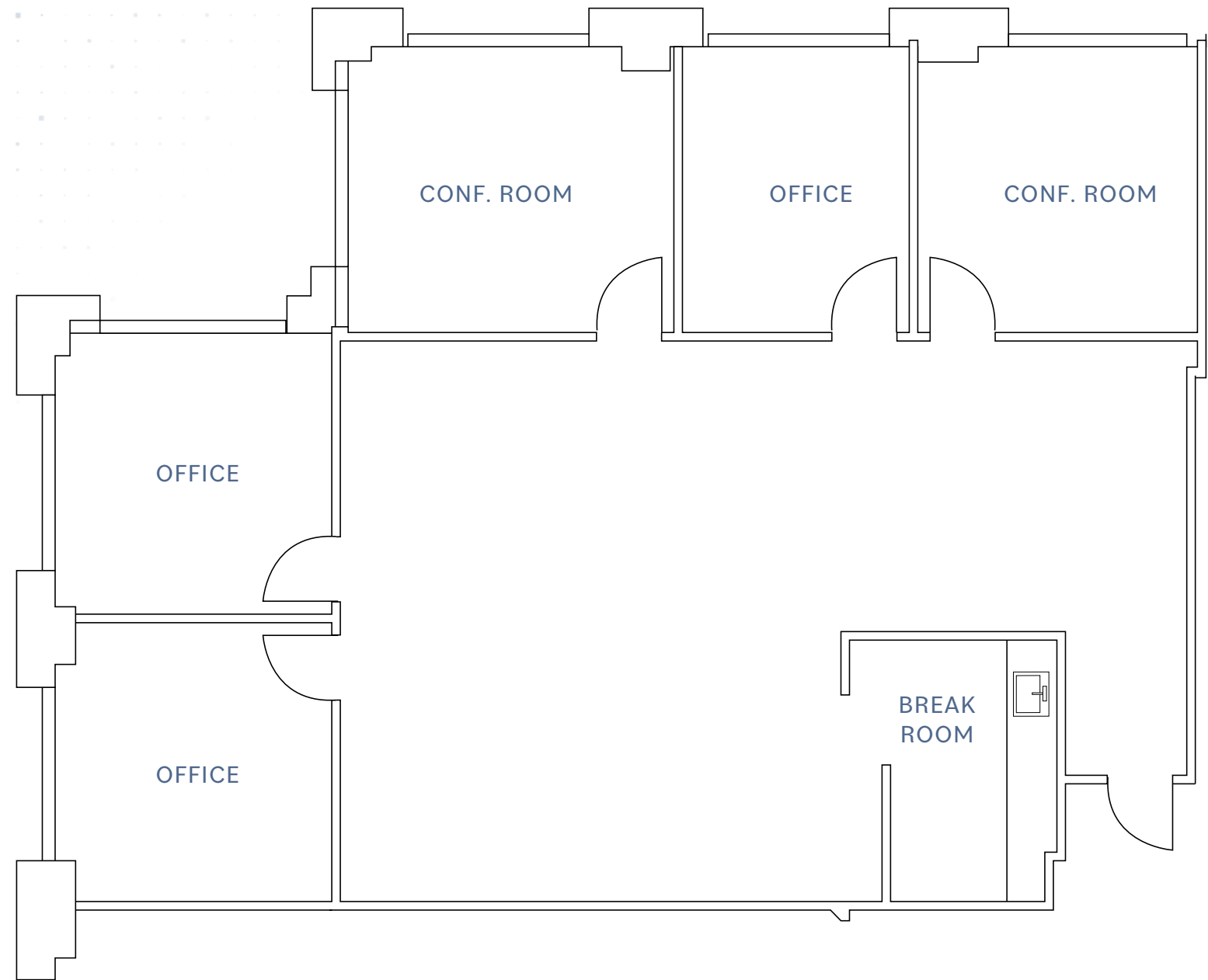
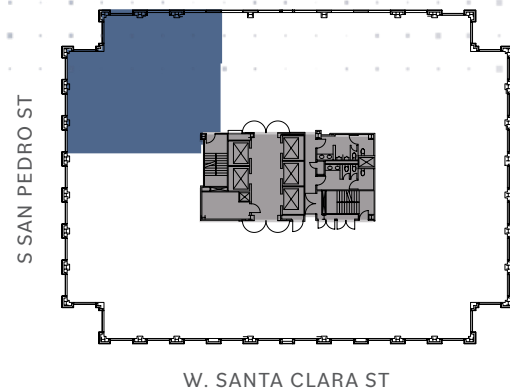


W. SANTA CLARA ST

# Suite 715

±2,087 SF

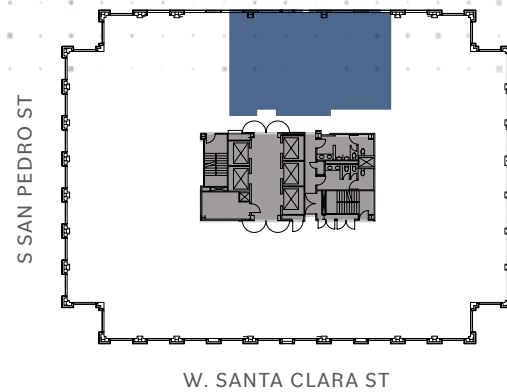
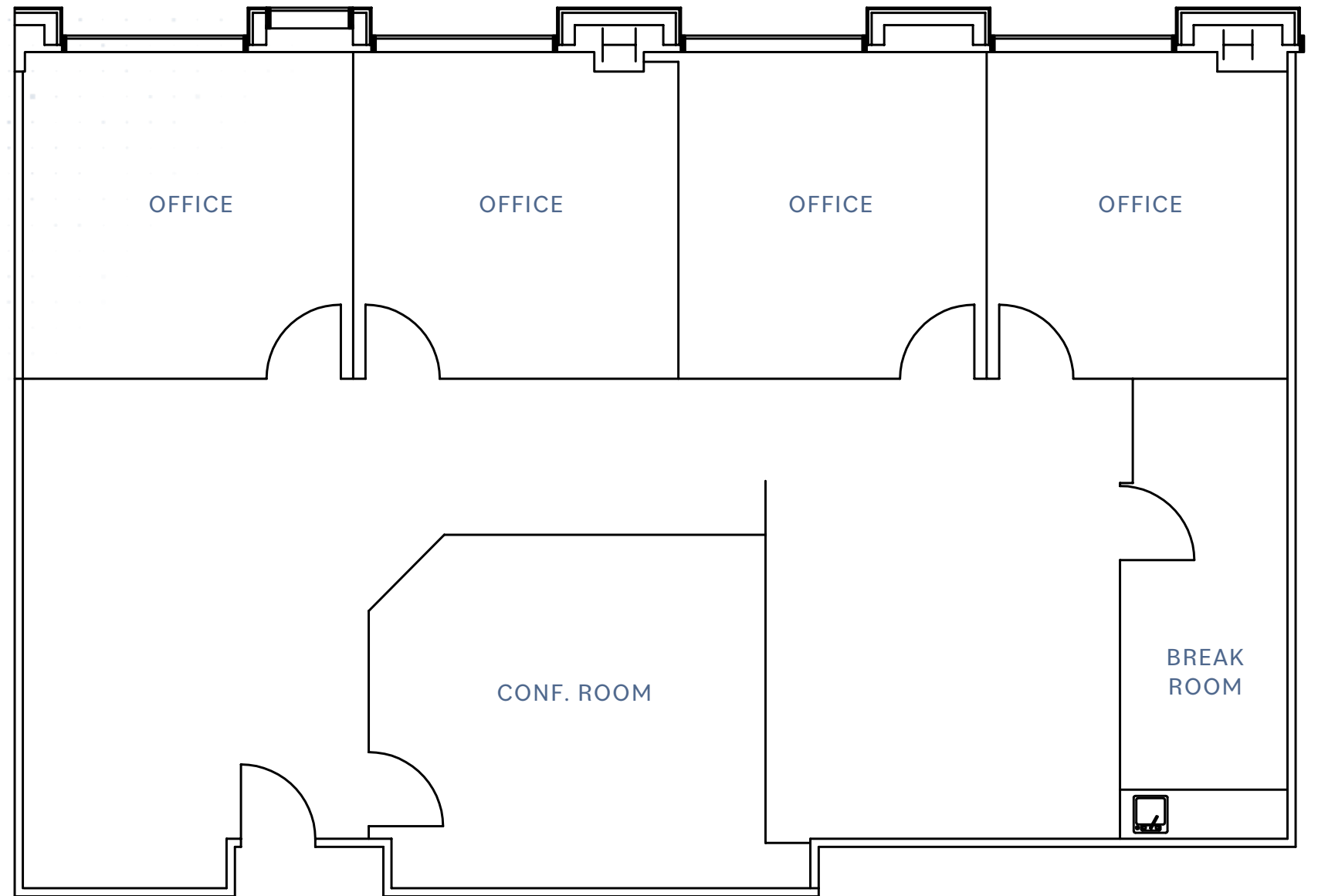
- 3 OFFICES
- 2 CONFERENCE ROOMS
- BREAK ROOM
- AVAILABLE NOW



# Suite 1025

±2,200 SF

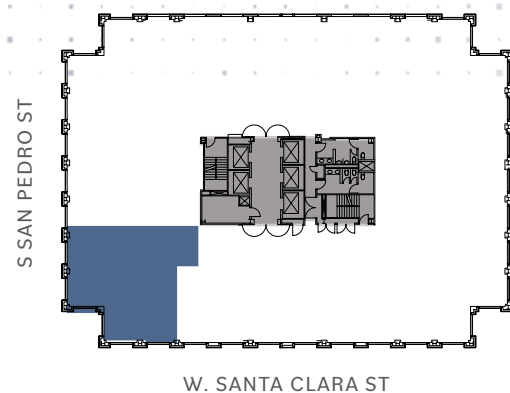
- 4 OFFICES
- 1 CONFERENCE ROOM
- BREAK ROOM
- AVAILABLE NOW



# Suite 925

**MARKET READY  
FULLY FURNISHED  
±2,968 SF**

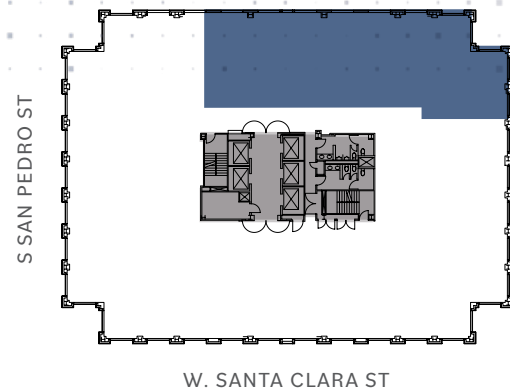
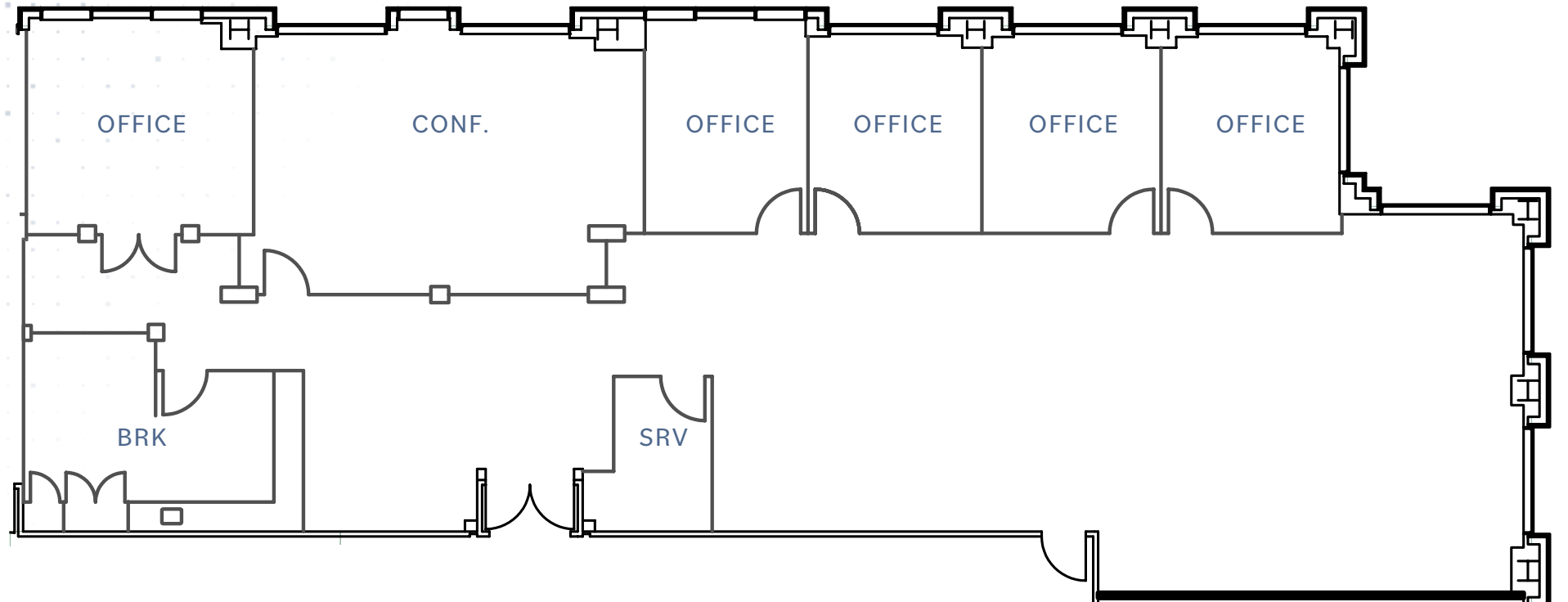
- 2 OFFICES
- 2 CONFERENCE ROOMS
- BREAK ROOM
- IT/STORAGE ROOM
- AVAILABLE NOW



# Suite 700

±4,604 SF

- 5 OFFICES
- 1 CONFERENCE ROOM
- 1 BREAK ROOM
- 1 SERVER ROOM
- AVAILABLE NOW

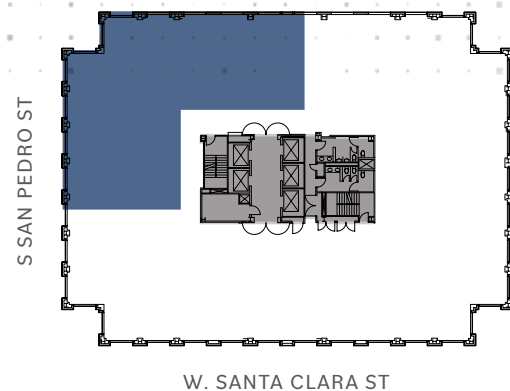
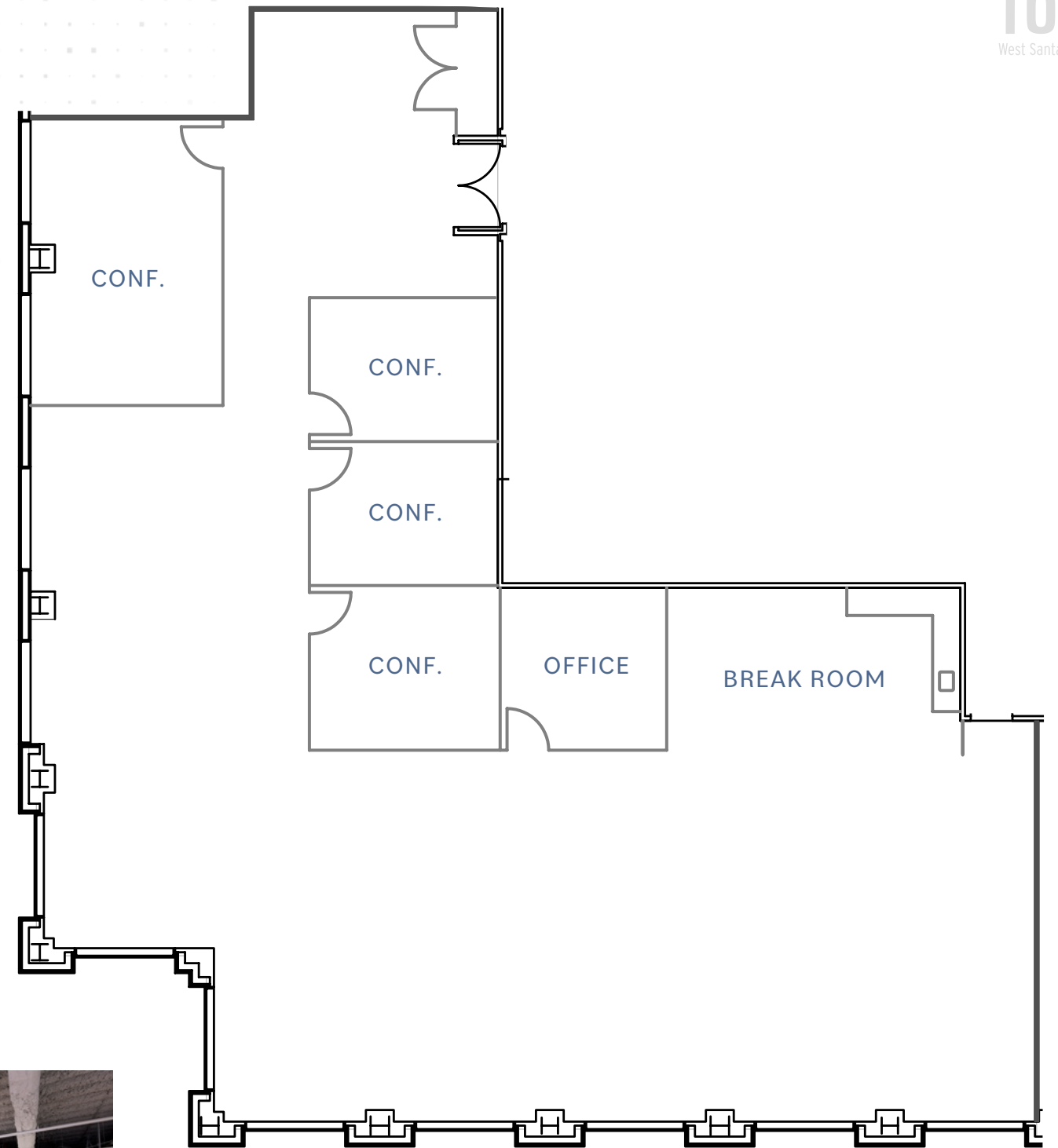


# Suite 775

MARKET READY  
±5,119 SF

- 4 CONFERENCE ROOMS
- 1 OFFICE
- 1 BREAK ROOM
- AVAILABLE NOW

[CLICK HERE FOR VIRTUAL TOUR](#)



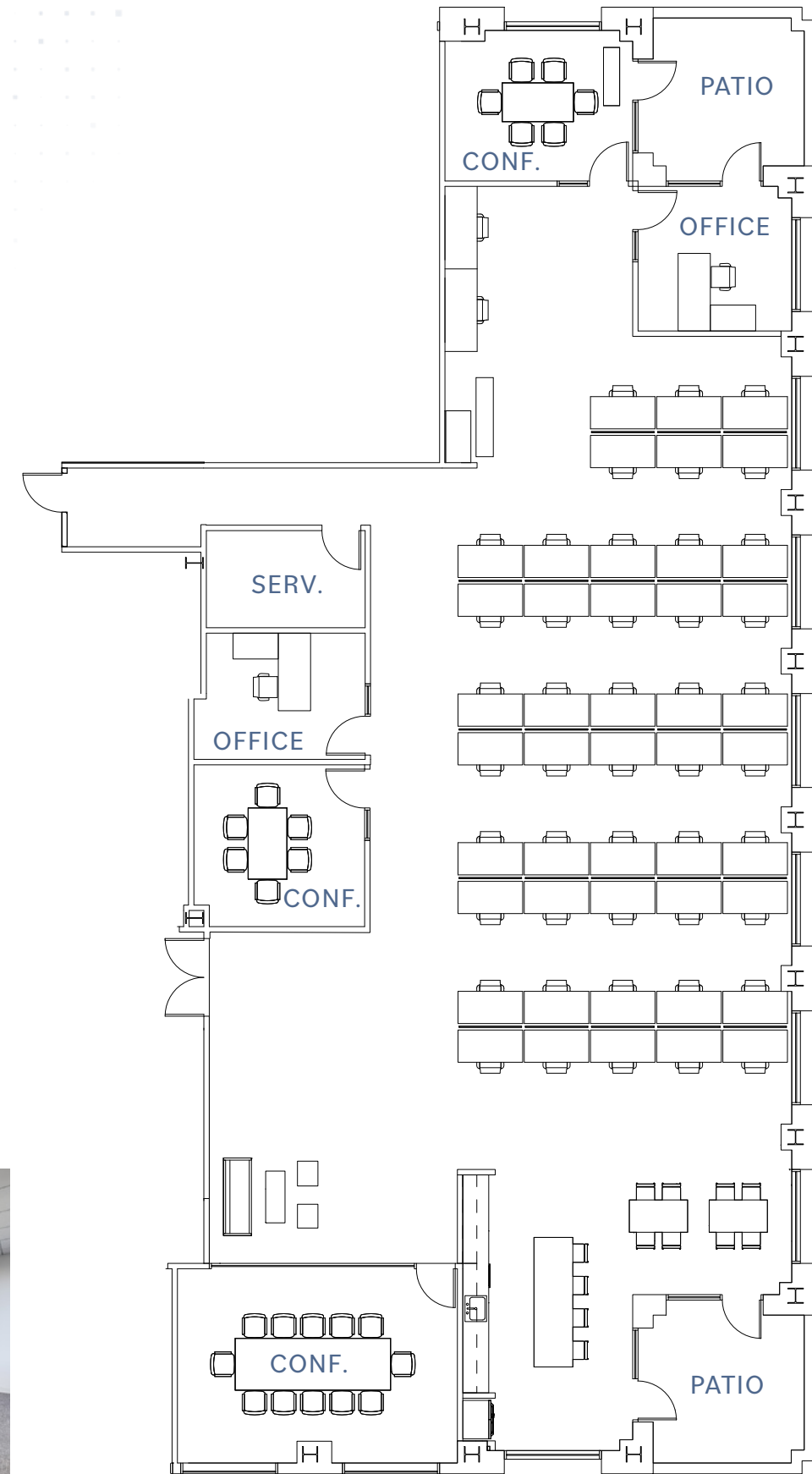
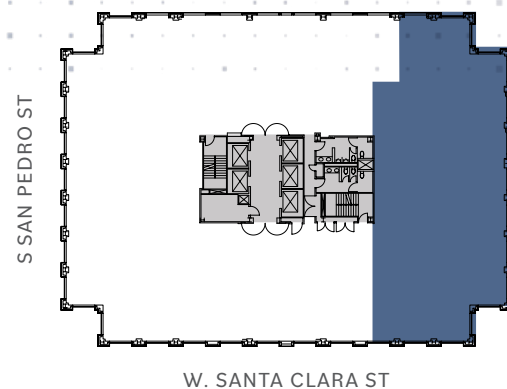
# Suite 525

MARKET READY

±5,733 SF

- 3 OFFICES
- 2 CONFERENCE ROOMS
- OPEN BREAK ROOM
- 2 OUTDOOR PATIOS
- SERVER ROOM
- FITS 48 60" WORKSTATIONS
- AVAILABLE NOW

[CLICK HERE FOR VIRTUAL TOUR](#)

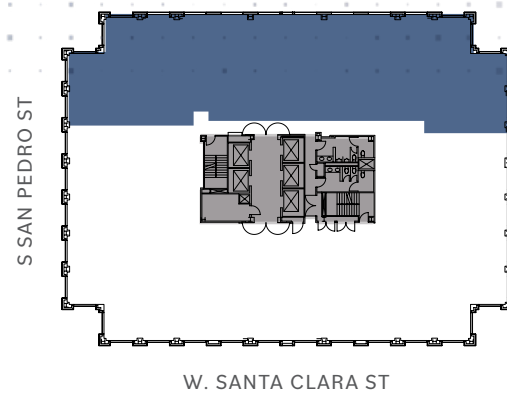
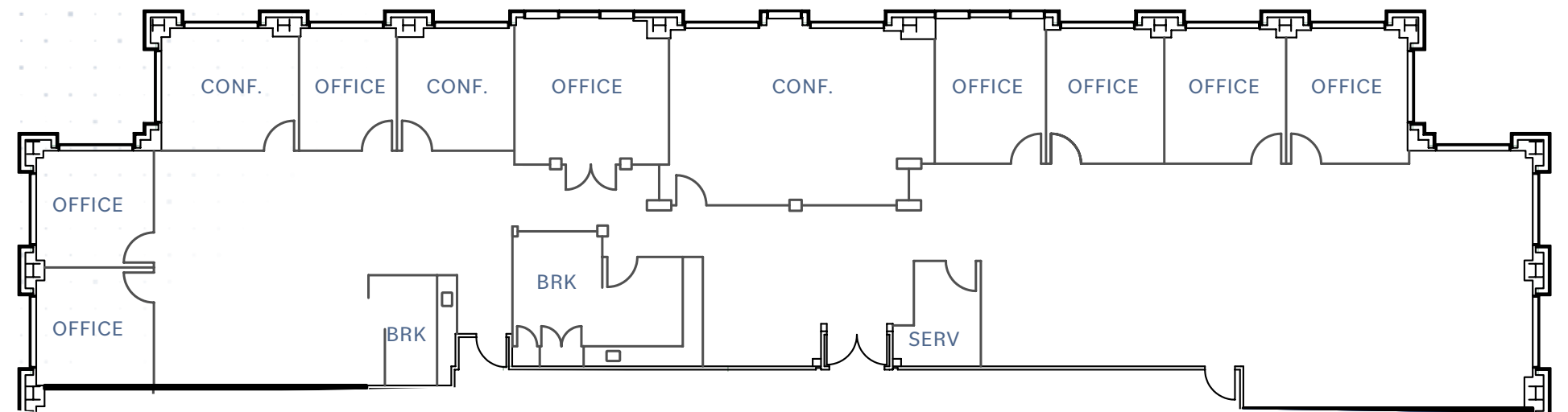




# Suite 700/715

±6,691 SF

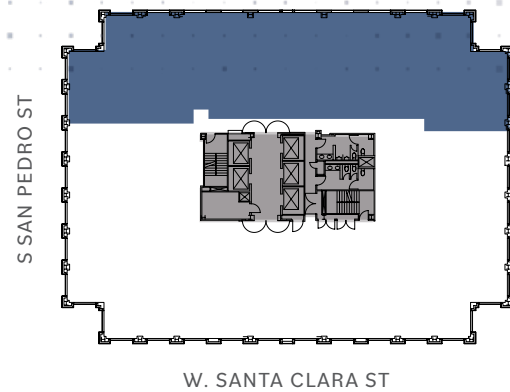
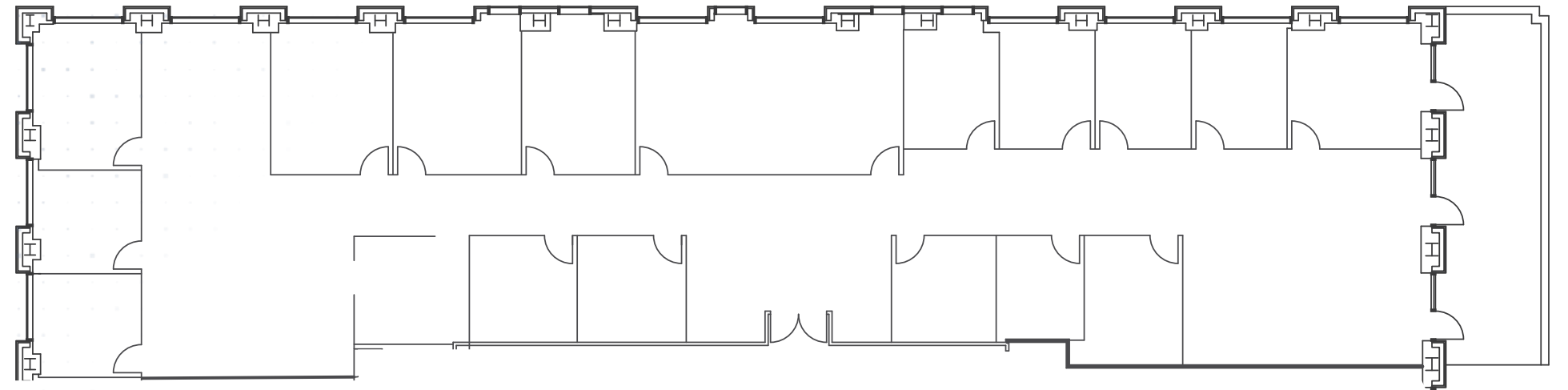
- 8 OFFICES
- 3 CONFERENCE ROOMS
- 2 BREAK ROOMS
- 1 SERVER ROOM
- AVAILABLE NOW



# Suite 475

±8,366 SF

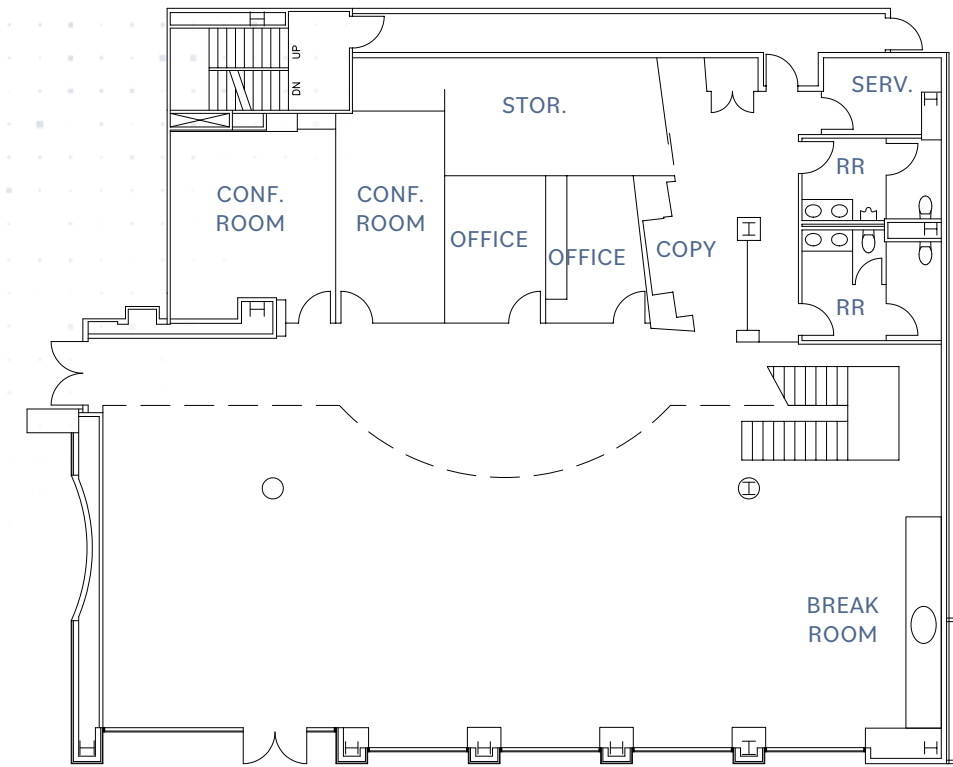
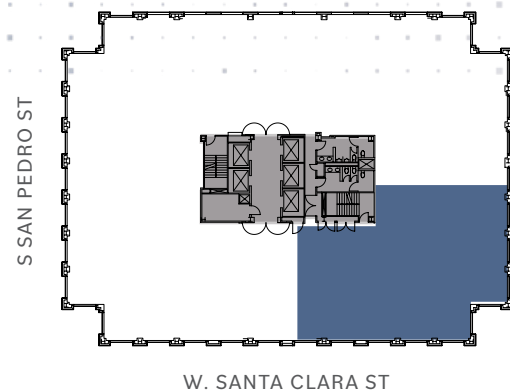
- AVAILABLE NOW



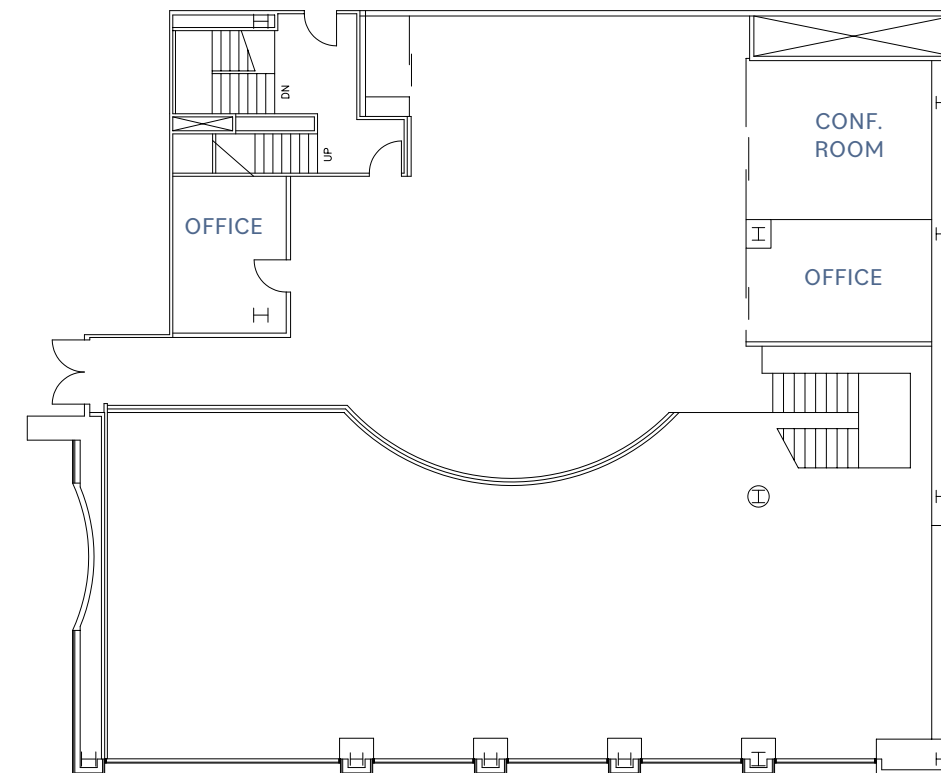
# Suite 102/202

±8,455 SF

- 4 OFFICES
- 3 CONFERENCE ROOMS
- 1 SERVER ROOM
- 1 STORAGE ROOM
- 1 BREAK ROOM
- IN-SUITE RESTROOMS
- AVAILABLE NOW



FIRST FLOOR

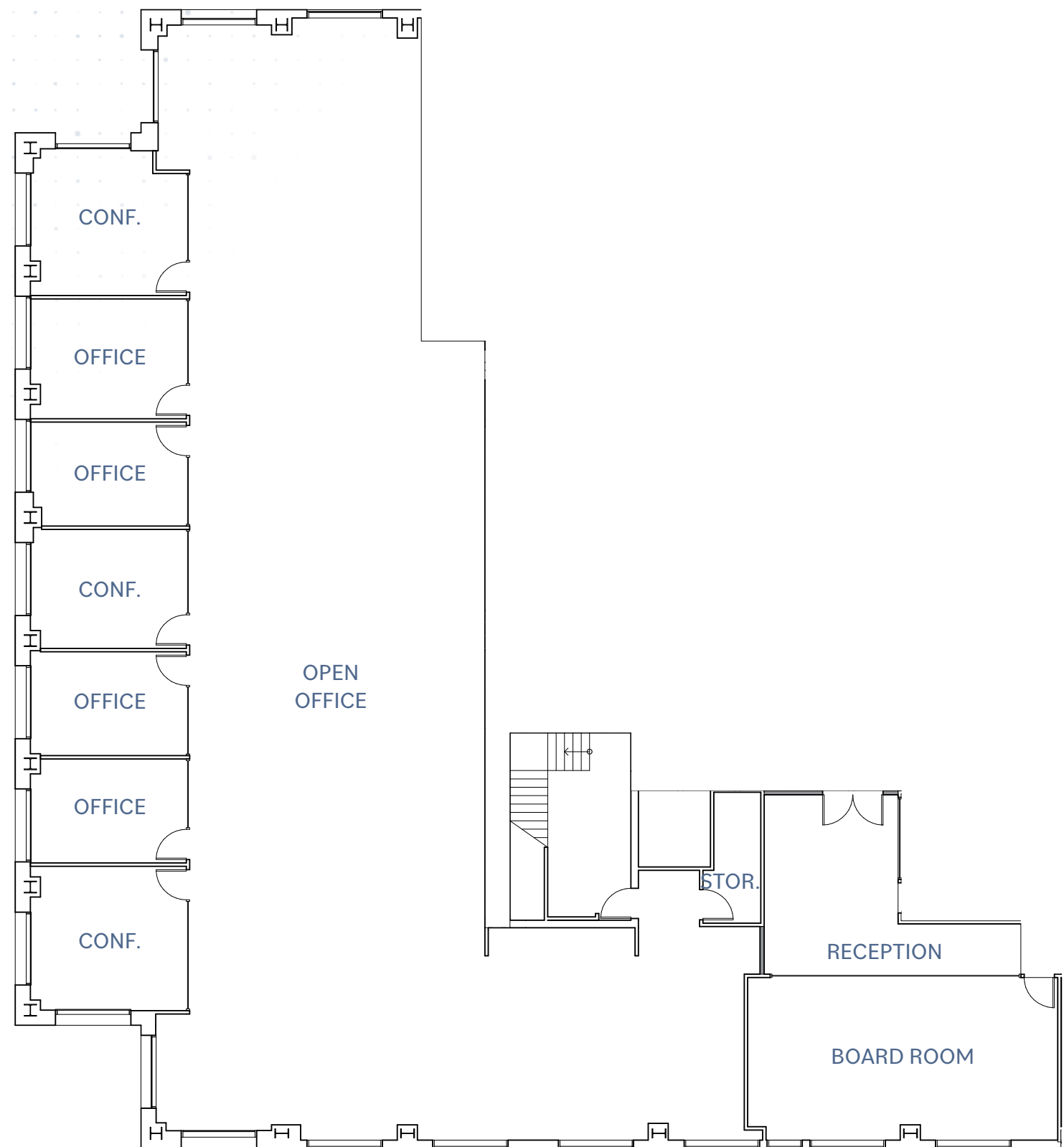
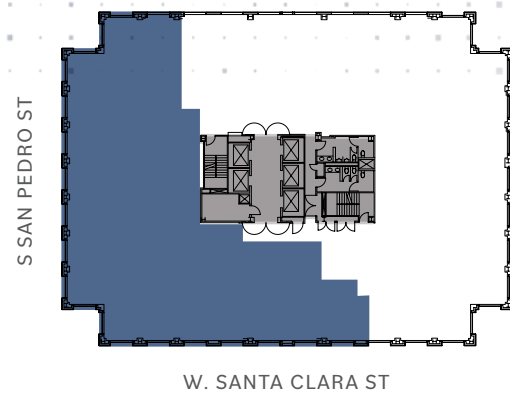


SECOND FLOOR

# Suite 1150

±8,741 SF

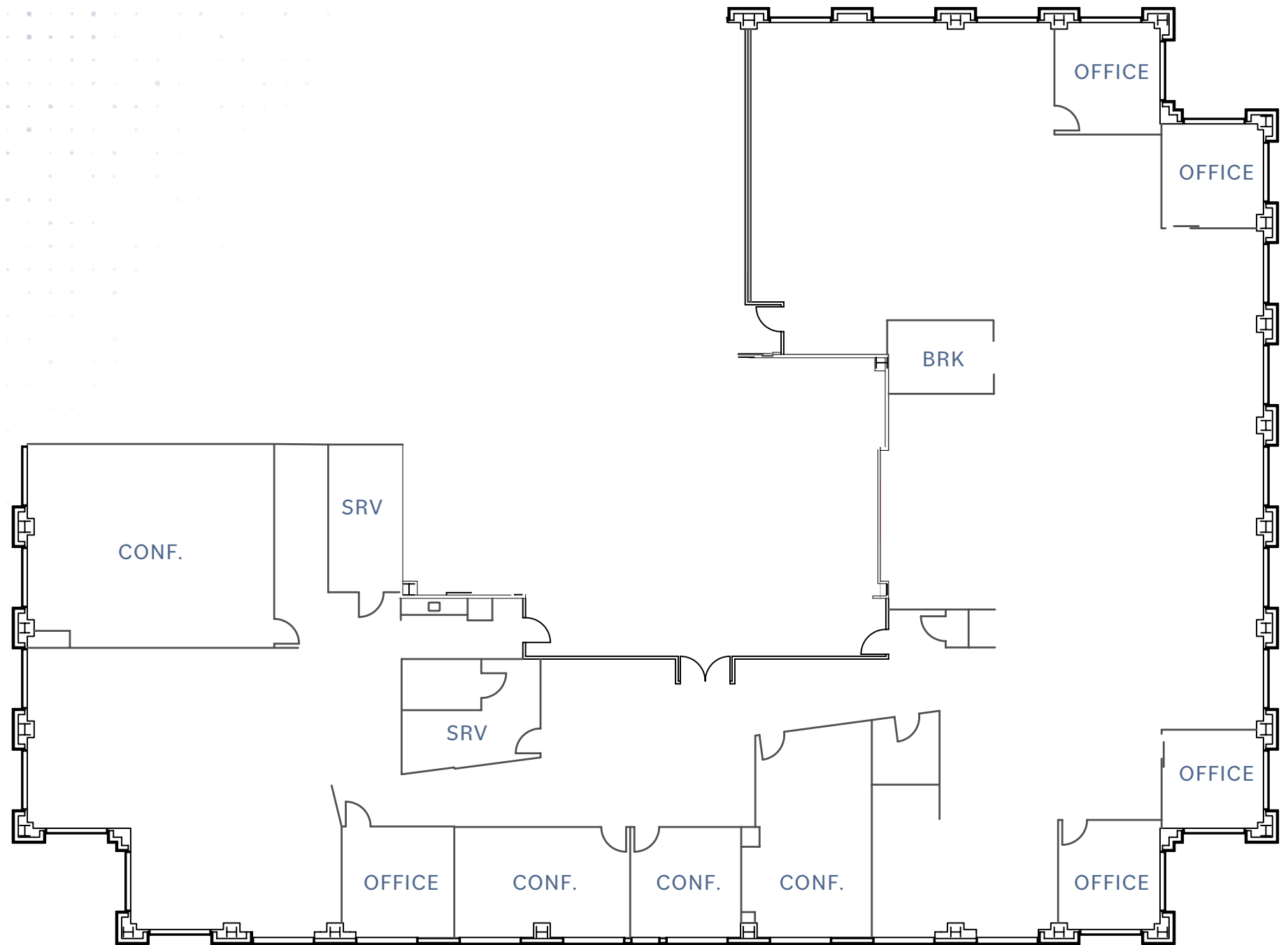
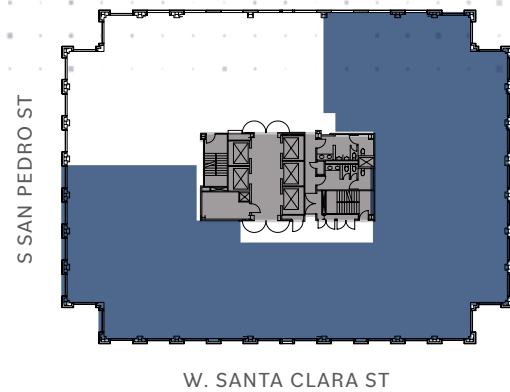
- 4 OFFICES
- 3 CONFERENCE ROOMS
- 1 BOARD ROOM
- 1 STORAGE ROOM
- RECEPTION
- OPEN OFFICE
- AVAILABLE NOW



# Suite 800

±12,921 SF

- 5 OFFICES
- 4 CONFERENCE ROOMS
- 2 BREAK ROOMS
- 2 SERVER ROOMS
- AVAILABLE NOW



# 160

West Santa Clara

**BRANDON BAIN**

+1 408 615 3416

[brandon.bain@cushwake.com](mailto:brandon.bain@cushwake.com)

LIC #01308375

**JEFF CUSHMAN**

+1 917 575 4722

[jeff.cushman@cushwake.com](mailto:jeff.cushman@cushwake.com)

LIC #01308295

**ALEX LAGEMANN**

+1 408 221 2310

[alex.lagemann@cushwake.com](mailto:alex.lagemann@cushwake.com)

LIC #02024474

©2024 Cushman & Wakefield. All rights reserved. The information contained in this communication is strictly confidential. This information has been obtained from sources believed to be reliable but has not been verified. NO WARRANTY OR REPRESENTATION, EXPRESS OR IMPLIED, IS MADE AS TO THE CONDITION OF THE PROPERTY (OR PROPERTIES) REFERENCED HEREIN OR AS TO THE ACCURACY OR COMPLETENESS OF THE INFORMATION CONTAINED HEREIN, AND SAME IS SUBMITTED SUBJECT TO ERRORS, OMISSIONS, CHANGE OF PRICE, RENTAL OR OTHER CONDITIONS, WITHDRAWAL WITHOUT NOTICE, AND TO ANY SPECIAL LISTING CONDITIONS IMPOSED BY THE PROPERTY OWNER(S). ANY PROJECTIONS, OPINIONS OR ESTIMATES ARE SUBJECT TO UNCERTAINTY AND DO NOT SIGNIFY CURRENT OR FUTURE PROPERTY PERFORMANCE. COE-PM-West-01.4.2024



**CENTURY | URBAN**